

# AARP Age-Friendly Platform



Age-Friendly Communities  
Are Livable for  
People of All Ages

Log In

## Welcome to the AARP Network of Age-Friendly States and Communities

AARP Livable Communities supports the efforts of neighborhoods, towns, cities and rural areas to be great places for people of all ages.

Learn More

Log In



**An Overview of Age-Friendly**  
Welcome to the AARP Network of Age-Friendly States and Communities

Learn More



**The Age-Friendly Process**  
Members of the AARP Network of Age-Friendly States and Communities commit to an assessment process and cycle of continuous improvement.

Learn More



**Learn What Communities are Doing**  
Use this interactive map to discover where and how AARP is helping communities become more livable and age-friendly.

View the Map



**Enroll in the Network**  
Join the AARP Network of Age-Friendly States and Communities

Enroll Now

## Livable Publications



**Creating Community Gardens for People of All Ages**  
A free, 32-page tool kit for neighbors and local leaders

Learn More



**Walk Audit Tool Kits**  
An all new guide and worksheets for conducting a safety audit of streets and sidewalks — and advocating for needed change. (Disponible en español también.)

Learn More



**Missing Middle Housing**  
What it is. Where it went. And why it's a needed housing option for people of all ages. Learn all of that and more in this 36-page, photo-filled guide.

Learn More



**AARP Disaster Resilience Tool Kit**  
A free, photo- and strategy-filled guide for how local leaders can reduce risks and better protect older adults. (Disponible en español también.)

Learn More



## Contact Us

AARP Livable Communities  
601 E. St. NW  
Washington, D.C. 20049

Email: [Livable@aarp.org](mailto:Livable@aarp.org)

## Privacy & Terms

Your Privacy Choices  
Privacy Policy  
Terms of Use

Find out more about the [AARP Age-Friendly Network](#)

Access the [Age-Friendly Guidebook](#)

If you are part of the Age-Friendly Network check out the [Age-Friendly Portal](#).

If you don't have an account for the Age-Friendly Portal and would like access: email [AARPAge-FriendlyNetwork@aarp.org](mailto:AARPAge-FriendlyNetwork@aarp.org) requesting access to the portal and make sure to include your: first name, last name, email and the age-friendly community you are connected to.

Bill Armbruster

Senior Advisor, AARP Livable Communities

[warmbruster@aarp.org](mailto:warmbruster@aarp.org)

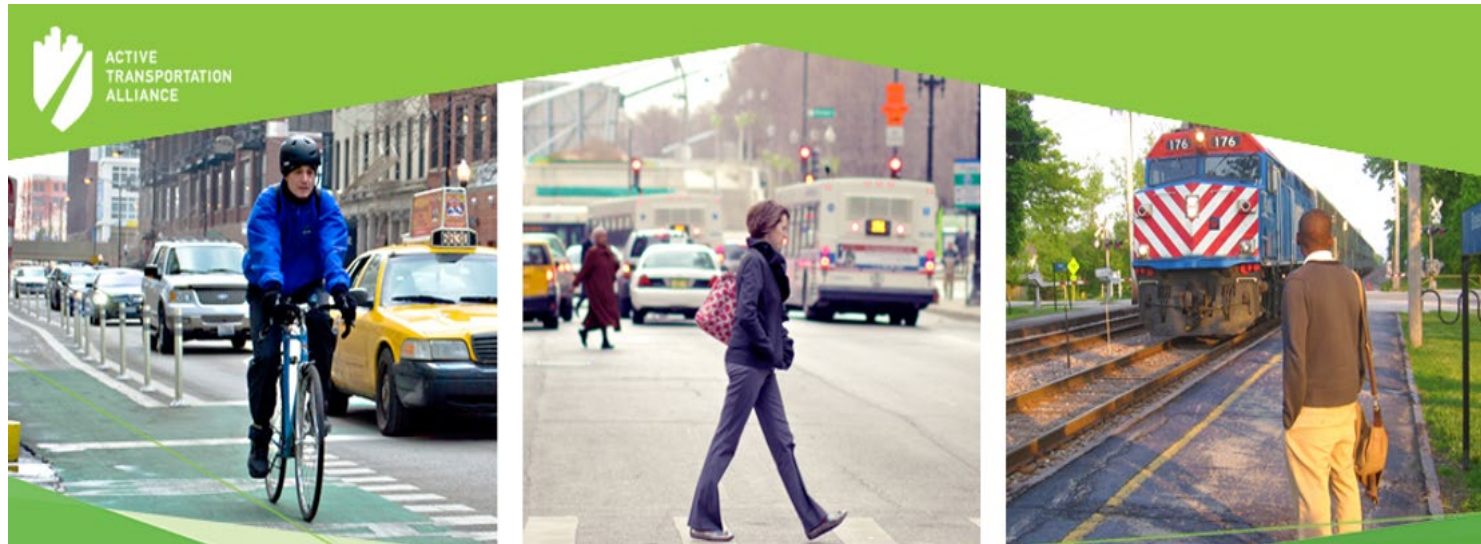


# Funding for walking & biking: ITEP Overview

March 7, 2024



# Active Transportation Alliance



## Our Mission

To advocate for walking, bicycling, and public transit to create healthy, sustainable, equitable communities.



*ISPAN is made possible with funding from the Centers for Disease Control and Prevention and administered by the Illinois Public Health Institute in collaboration with partners in the Illinois Alliance to Prevent Obesity*



# Advocating for funding



## 2019 Campaign:

- Established **\$50 million** in dedicated state funding for walking, biking, and trail projects in the capital bill.



# What is ITEP?



- Illinois Transportation Enhancement Program (ITEP) is a federal and state funding program administered and managed by the **Illinois Department of Transportation (IDOT)**
- Important source of funding for **walking, biking, and trail projects**
- Funding cycle every two years.
- Call for proposals opens **August 2024**



**Illinois Department of Transportation**

# What is ITEP?



## IDOT's Illinois Transportation Enhancement Program (ITEP)

Federal Funding



State Funding

2024 Cycle 16

\$100+ million (TBD)



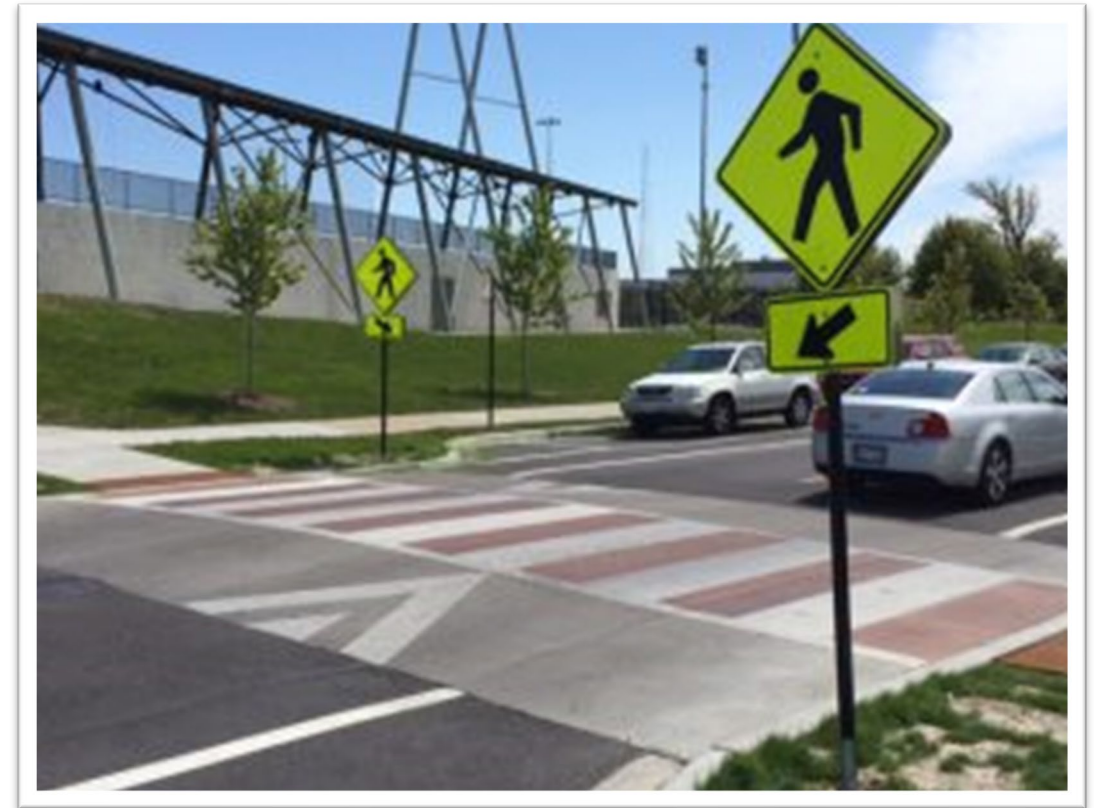
Riders on the Kickapoo Rail Trail (Image: Fred Delcomyn)

**Program Goal:** Allocate resources to well-planned projects that provide and support alternate modes of transportation and improve quality of life.

# ITEP key points



- Projects must enhance the transportation system by **servicing a transportation need**
- Cannot be solely for **recreation**
- Capped at **\$3 million** per project
- **Reimbursable** grant program
- **Local match** sliding scale

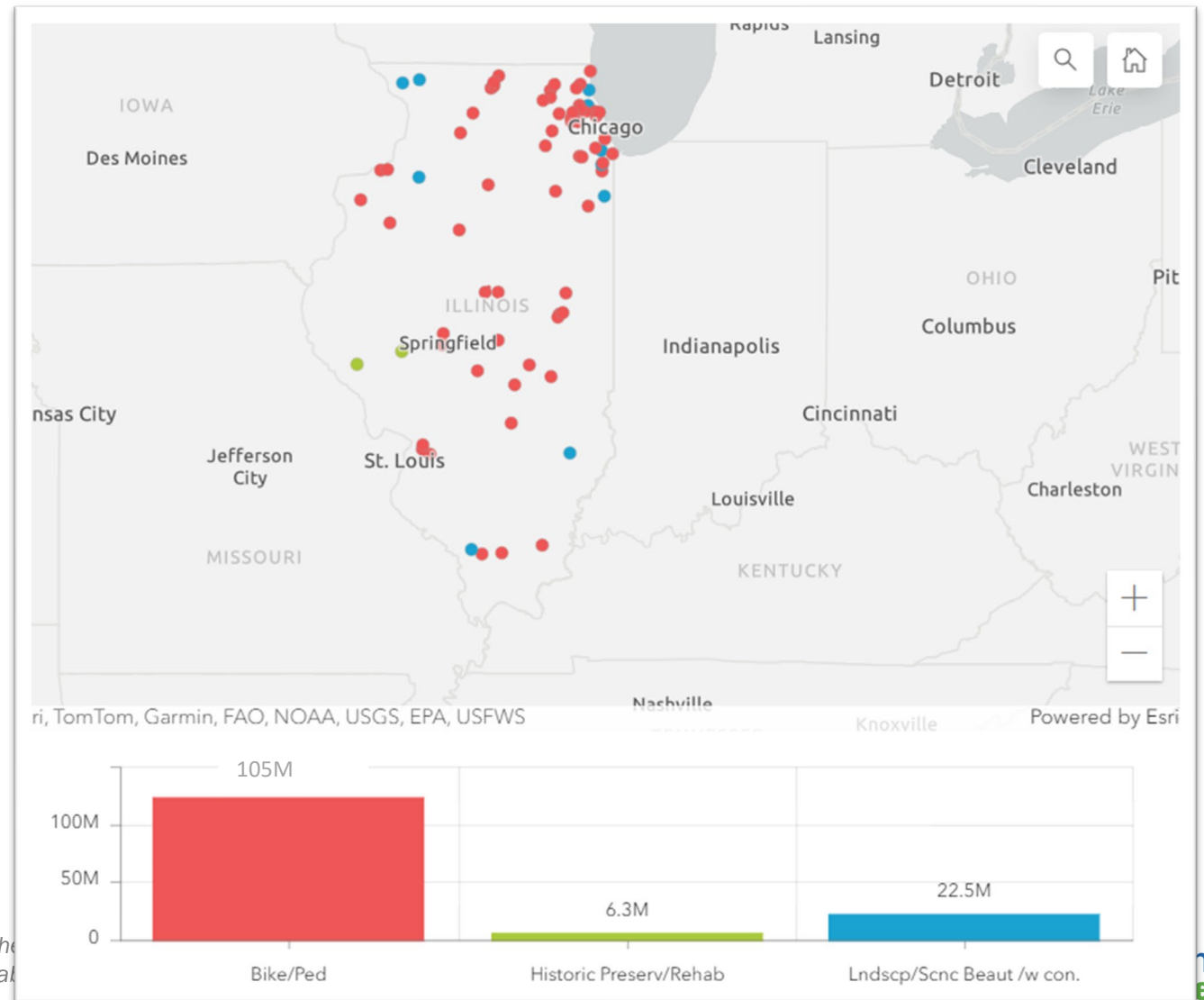




# ITEP 2022



- **200+ applications** were submitted in 2022
- 73 projects awarded funding, totaling **\$129 million**
- Average funding amount was **\$1.7 million per project**



ISPAN is made possible with funding from the  
by the Illinois Public Health Institute in collab

# Past ITEP projects



- Park Forest **multi-use trail**
- Homewood 183<sup>rd</sup> Street **bike lanes**
- Batavia Route 31 **road diet**
- Prospect Heights Wolf Road **sidewalk connectivity project**
- McHenry County's Randall Road **sidewalks** and **shared-use path**
- Streamwood Route 53 **bike/pedestrian overpass**



Photo credit: James Steinkamp Photography



# Funding Eligibility



# Who can apply for funding?



## Local entities with taxing authority:

- Local governments
- Regional transportation authorities
- Transit agencies
- Natural resource or public land agencies
- School districts or schools
- Tribal governments
- Non-profits
- MPOs with population under 200,000
- State DOT at request of eligible entity
- Other local or regional govts with oversight of transportation
- **Note:** *MPOs with populations over 200,000 cannot sponsor a project, but can partner.*

See Section A of ITEP Program Guidelines

ISPAN is made possible with funding from the Centers for Disease Control and Prevention and administered by the Illinois Public Health Institute in collaboration with partners in the Illinois Alliance to Prevent Obesity



# Eligible pedestrian facilities



New sidewalks, pedestrian crossings (e.g. islands, RRFBs, crosswalks), pedestrian lighting



# Eligible bicycle facilities



Bikeways (lane, path, route), trails, road diet, bike/ped bridge, path lighting



# Eligible bicycle facilities



Bikeways (lane, path, route), trails, road diet, bike/ped bridge, path lighting



# Other eligible facilities



As part of a larger project: Utility relocation, directional signs, trees/shrubs, permanent benches, bike locker/racks



*ISPAN is made possible with funding from the Centers for Disease Control and Prevention and administered by the Illinois Public Health Institute in collaboration with partners in the Illinois Alliance to Prevent Obesity*



# Helpful resources



## Active Trans ITEP Resource Page

- Recordings from 2022 ITEP webinar series
- Frequently asked questions
- Engineering firms offering pro-bono support
- Other relevant documents
- [activetrans.org/ITEP](https://activetrans.org/ITEP)



# ISPAN Program – webinar series



- **Part 1 (July TBD):** ITEP basics, project eligibility, best practices
- **Part 2 (August TBD):** Scoring criteria, application walk-through, Q&A with IDOT staff
- **Part 3 (September TBD):** Q&A with IDOT staff



# Questions?



- Resources available at
  - [activetrans.org/ITEP](https://www.activetrans.org/ITEP)
  - Complete Streets Coalition list serv
- Maggie Czerwinski:
  - [maggie@activetrans.org](mailto:maggie@activetrans.org)
  - Email Maggie to join the Complete Street Coalition email list



**Metropolitan Mayor's  
Caucus**

**Age-Friendly Community  
Collaborative**

**Thursday, March 7, 2024**

# What is CVP?

Pace furnishes vehicles to units of government to provide public transportation service to constituents.



- Vehicles are 7-14-passenger, vans or mini-buses.
- Eligibility include municipalities, townships, and other local bodies of government located in Pace's service area.
- The vehicle is used to provide transportation to the general public or specific groups such as senior citizens and people with disabilities.

**Pace Community Vehicle Program**



# CVP Vehicles



Pace Community Vehicle Program



# Driver Criteria

## Municipality provides its own drivers

### Driver Responsibilities

- Driving
- Fueling
- Coordinating Maintenance
- Monthly Report
- Washes

### Driver Qualifications

- At least 21 years old
- Good driving record
- Pass a drug test and physical
- Attend 2 day orientation class at Pace



**Pace Community Vehicle Program**



# CVP Costs

## Municipality:

- Security deposit of \$500 per vehicle
- \$100.00 per month per vehicle
- Fuel
- Washes
- Insurance
- Drivers



- Accessible Paratransit-Type Vehicle
- Municipality is responsible for routine maintenance, vehicle repairs.



- Accessible Van
- Pace covers the cost for routine maintenance, vehicle repairs.

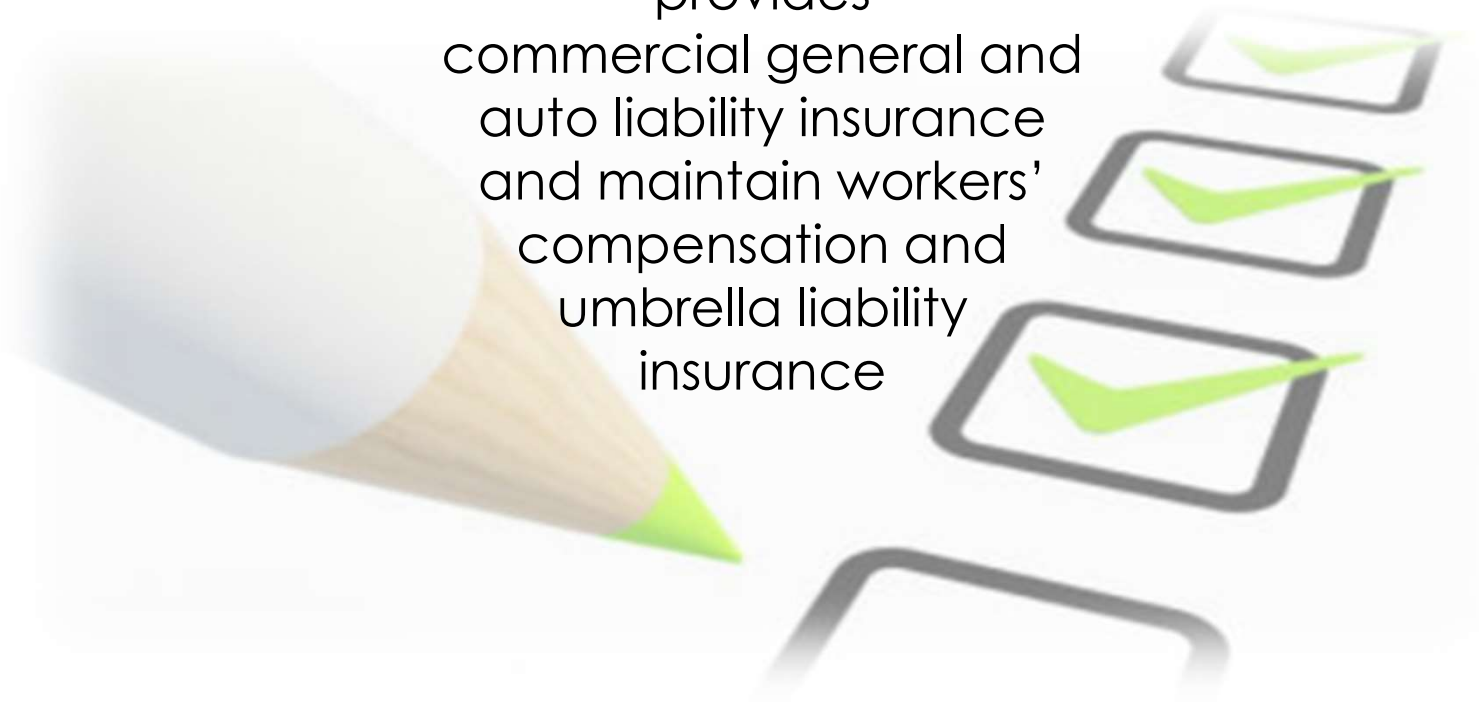
# Pace Community Vehicle Program





# Insurance Requirements

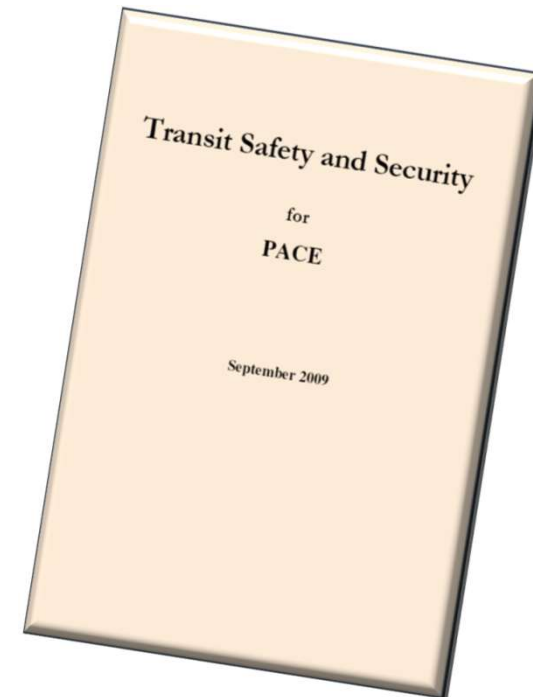
Unit of government  
provides  
commercial general and  
auto liability insurance  
and maintain workers'  
compensation and  
umbrella liability  
insurance



**Pace Community Vehicle Program**

# Safety, Security, & Emergency Preparedness Plan

Effective policies, procedures, and training are in place to respond to fires, floods, tornadoes, blizzards, explosions, civil disobedience, and train/bus/plane accidents, as well as terrorism.



## Pace Community Vehicle Program



# CVP in Service



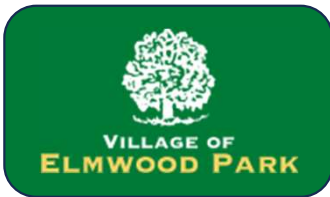
## Hanover Township Dial-A-Bus

- Residents, age 55+ or 18 with disabilities
- Monday - Friday 8:00 AM - 3:00 PM
- Suggested Donation: \$1.00 for each one-way ride



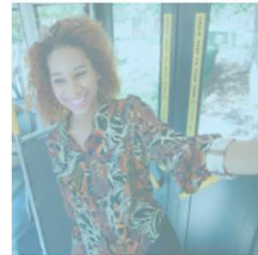
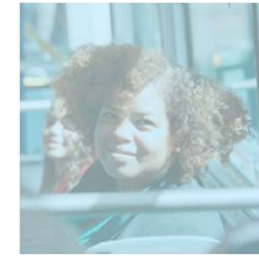
## Wheeling Township Transportation

- Seniors and people with disabilities
- Monday - Friday 9:00 AM - 3:00 PM
- \$2.00 for each one-way ride within township
- \$8.00 for each one-way medical outside township



## Village of Elmwood Park Senior Dial-A-Ride Program

- Seniors and people with disabilities
- Monday - Friday - 7:00am – 2:00pm
- Saturday 8:00am – 12:00pm
- Free: Designated stops and service area



# Pace Community Vehicle Program



# How to Start Your CVP

## How to start your Pace CVP

- Meet with your Pace representative
- Complete the application forms
- Submit application electronically
- Drivers will complete the drug test and physical
- Drivers are scheduled for orientation
- Upon completion, Drivers are issued the vehicle and your program can begin!



**Pace Community Vehicle Program**



# CONTACT US

**Beth Gonzalez**  
**Pace Suburban Bus**

Community Relations Representative

Cell: 847-571-4269

[Elizabeth.Gonzalez@PaceBus.com](mailto:Elizabeth.Gonzalez@PaceBus.com)

