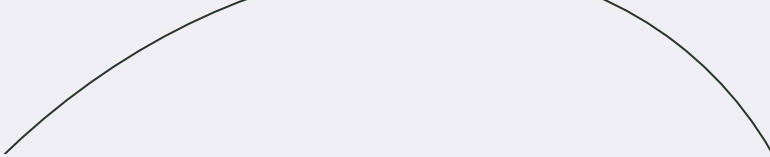
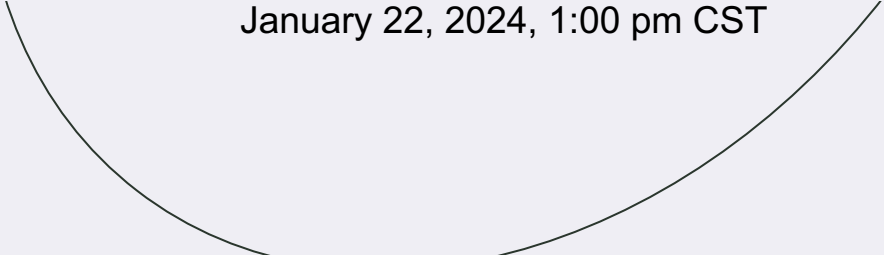


---



# Supporting Municipalities for Asylum Seeker Services (SMASS) Round II

Funding Opportunity Info Session  
January 22, 2024, 1:00 pm CST



---

# Information Session Agenda

**01**

Introductions

**02**

Asylum Seekers  
in IL Today

**03**

SMASS I  
Overview

**04**

SMASS II  
Overview

**05**

Q&A

**06**

Closing Remarks  
and Next Steps



# Introductions

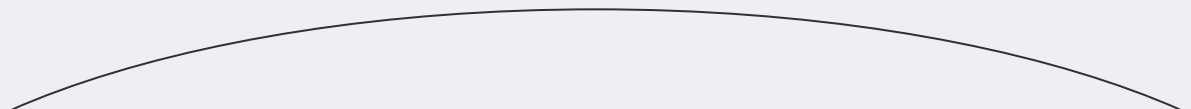
Illinois Department of Human Services (IDHS)

Metropolitan Mayors Caucus (MMC)

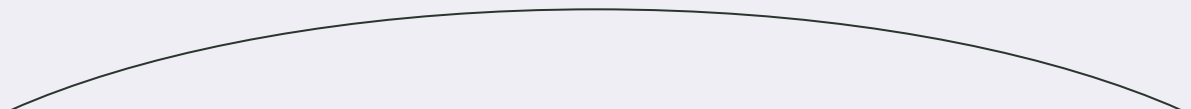
BRicK Partners LLC (BRicK)

Municipalities and Other Participants

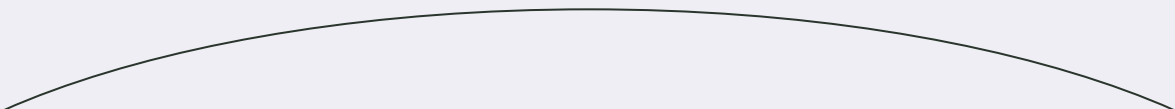
# Asylum Seekers in Illinois Today

- Over 38,000 Southern Border Arrivals (SBAs) have arrived in Illinois since August 2022.
  - While most SBAs have come to Chicago, municipalities outside of Chicago have also been receiving asylum seekers from southern border states.
  - Some SBAs arrive in municipalities through connections with family and friends. More recently, others have been dropped off in municipalities outside Chicago on buses sent by the State of Texas.
  - The State of Illinois has provided funding support and partnered with the Metropolitan Mayors Caucus to award grants to municipalities that provide services to asylum seekers in the Fall of 2023.
  - On January 16, Governor Pritzker announced that \$11 million is available to provide additional support to municipalities outside of Chicago.
- 

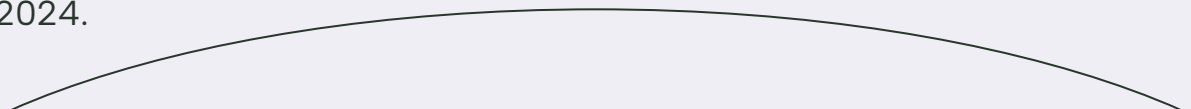
# SMASS I - Overview

- MMC was selected to manage the distribution and administration of SMASS funds to municipalities.
  - To date, SMASS has allocated \$33,170,000 in grants to five municipalities serving asylum seekers for 5 eligible service categories:
    - Shelter and Transitional Housing
    - Food
    - Wraparound Services
    - Legal Assistance
    - Health & Wellness
  - An asylum seeker is eligible for SMASS-funded services if they are "an individual who crossed the Mexico/U.S. border on or after August 1, 2022, with the intent to stay permanently, and who does not possess any permanent or interim U.S. legal status (which does not include being in parole status), such as legal permanent residency, a student or work visa, etc."
  - Each of the five municipalities provided with SMASS funding has its own model of service delivery.
- 

# Lessons Learned from SMASS I

- Support from municipal and inter-jurisdictional leaders is critical.
  - Service models can be successfully built through collaboration with local shelter providers and social service agencies who have experience serving multi-lingual and multi-cultural immigrants.
  - Temporary housing can be provided using local emergency shelters, hotels, the YMCA, churches, local housing, unused schools, and/or other options.
  - Legal workshops have been a key way to provide an educational forum for large groups of asylum seekers. Individual legal assistance is likely needed in the preparation of legal immigration applications, such as work permits or asylum.
  - Each service model is unique and built on the resources available at each municipality. Community-based solutions are the best approach.
- 

# SMASS II - Overview

- \$11M now available through a Request for Information (RFI) as first part of two-part process.
  - Respondents to SMASS II RFI must be municipalities (e.g. any level of public government within IL), except the City of Chicago.  
*The State is continuing to support the City of Chicago with direct funding as well as funding to support the overall asylum seeker response and is launching this latest round of funding to advance our shared goal of increasing capacity outside of the City.*
  - Respondents can choose to work with other municipalities, non-profit and/or for-profit service providers as sub-recipients/partners.
  - The definition of asylum seeker and eligible services are the same as Round I (Shelter and Transitional Housing, Food, Wraparound Services, Legal Assistance, Health & Wellness).
  - Funds are not available for administrative expenses, nor to relocate asylum seekers outside of respondent's jurisdiction.
  - SMASS Round II funds available to reimburse grantees for eligible expenses incurred from January 16 – June 30, 2024.
- 

# SMASS II - Part 1: Request for Information (RFI)

## ***Submit RFI***

- RFIs on a rolling basis
- Final due date: 1/31/24
- The sooner municipalities respond, the sooner they will be determined eligible to participate in Part 2 – Proposal Completion

## ***RFI Review Process***

- RFIs reviewed upon receipt
- Within 5 business days of the receipt of the RFI, the Caucus will review and notify the municipality if it is eligible to be considered for funding and participate in Part II of this process.

## ***RFI Requirements***

- Partner names, if known
- Proposed services
- Estimated number of asylum seekers to be supported by funds
- Documentation of support from municipalities



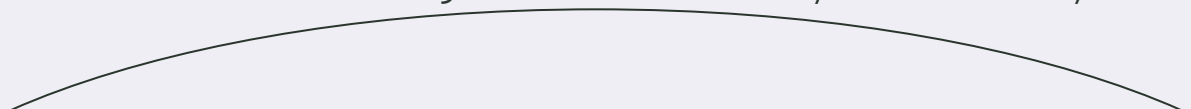
# SMASS II - Part 2: Proposal Completion

After the review of the RFI, only municipalities deemed eligible for funding consideration will proceed to complete Part 2. With assistance from the Caucus, municipalities will complete the following:

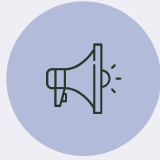
- Detailed work plan and budget proposal: overall and per-partner
- Proposed performance goals and metrics
- Partner MOUs and/or subcontracts

Upon the completion of Parts 1 and 2, final grant awards to eligible municipalities will be based on a variety of factors, including but not limited to available funding, number of asylum seekers served, viability of proposed services and work plan, and the experience and capacity of both the Lead Municipality and its partners, if applicable, to carry out the plan.

Announcements will be made on a rolling basis between January 31 and February 15<sup>th</sup>.



# SMASS II: Key Dates



Jan 16

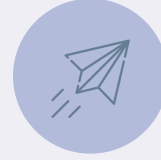
RFI Released

Municipalities  
Encouraged to  
Respond ASAP



Jan 22

Info Session,  
1pm CST



Jan 31

Last Day to  
Submit RFI  
Response, 5:00  
pm CST deadline



Feb 15

Last Day of  
Award  
Announcements



*Eligible RFI respondents will be invited to work with the Caucus to finalize a detailed work plan and budget proposal.  
RFI Submittals and proposal reviews will both proceed on a rolling basis.*

# Role of Lead Municipality

- Submit RFI and work with MMC to complete all requirements
  - Program and fiscal management
  - Execute MOUs/contracts with partners
  - Establish detailed budgets, scopes of work, and performance goals
  - Submit monthly program and fiscal report to MMC
- 



Q & A

# Closing Remarks and Next Steps

- Please make sure to review FAQs and other information that will be updated on MMC's website
  - Please also register to receive further email updates by emailing [idsgrant@mayorscaucus.org](mailto:idsgrant@mayorscaucus.org)
  - A recording of this presentation and associated notes will be made available online
  - Media inquiries should be directed to Rachel Otwell at [Rachel.otwell@Illinois.gov](mailto:Rachel.otwell@Illinois.gov)
  - Other inquiries should be directed to IDHS/MMC at [idsgrant@mayorscaucus.org](mailto:idsgrant@mayorscaucus.org)
  - Thank you for your leadership and interest!
- 