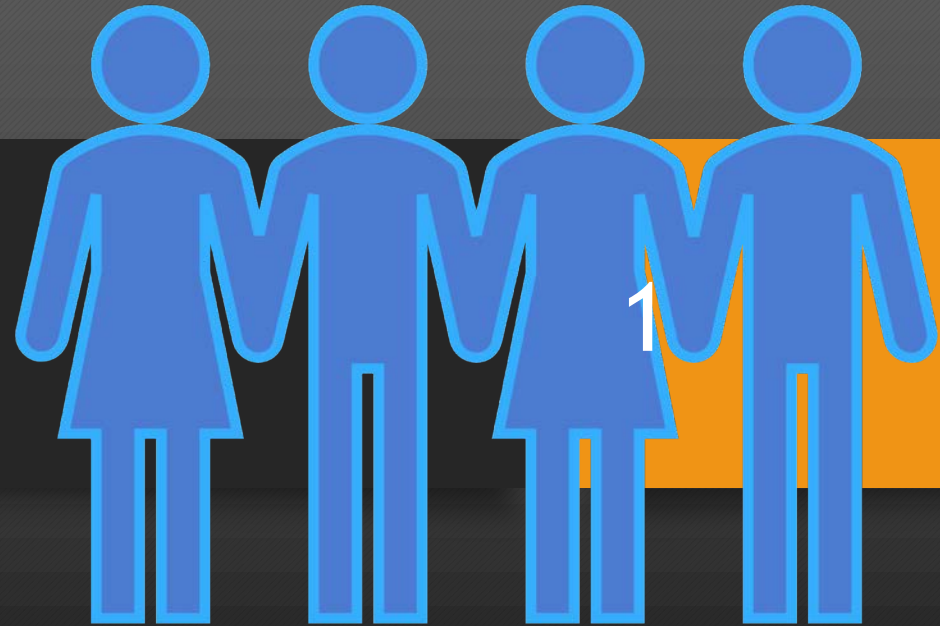


Environmental Justice Mapping

October 17, 2023

Metropolitan Mayors Caucus

Environment Committee



What is Environmental Justice?

Environmental Justice (EJ) is equity in the administration of environmental policies and practices without regard to race, ethnicity, socioeconomic status, age, or any other demographics.

Requires just and equitable distribution of environmental benefits and harms (including cumulative impacts over time)

Focus of Environmental Justice

3

- Enhanced public outreach
 - Permitting
 - Rulemaking
 - Enforcement
 - Policy
 - Education of community members
 - Language Access
- Cumulative impacts
 - Evaluates existing environmental and public health conditions
 - May include:
 - Emissions from multiple sources
 - Multiple pathways
 - Social conditions and stressors
 - Community vulnerability
 - Public health information

EJ Mapping Tools

4

- Proliferation of mapping tools
- Illinois EPA utilizes EJ Start for most regulatory programs
- May use one or a combination of EJ mapping tools depending on goal
 - Permitting
 - Grant applications
- Mapping tools are screening level tools, more analysis may be appropriate

EJ Mapping Tools

5

- IEPA EJ Start GIS mapping tool
 - “area of EJ concern” is a community with a low-income and/or minority population greater than twice the statewide average
 - Exploring EJ Start update (2.0)
- Illinois Solar For All (ISFA) EJ GIS mapping tool
 - Data from USEPA EJ Screen
 - Processed similar to CalEnviroScreen
- Equity Investment Eligible Community Map (CEJA)
 - R3 Areas (Cannabis Regulation) historically excl. from economic opport.
 - ISFA map

EJ Mapping Tools (cont.)

6

- CDC Environmental Justice Index (EJI)
 - Ranks cumulative impacts of environmental injustice on *health* for every census tract
 - Being used by permit commenters
- Climate and Economic Justice Screening Tool (CEJST)
 - White House developed for Justice40 (tracking money spent, directing money)
 - Disadvantaged communities that are marginalized, underserved, and overburdened by pollution
- USEPA EJ Screen
 - Not indicate EJ communities
 - USEPA appears to use above 80th percentile on environmental indicators as EJ flag

Questions?

7

- Chris Pressnall - Manager, Office of Environmental Justice
- Phone: 217/524-1284
- Chris.Pressnall@Illinois.Gov