



June 21, 2022

Illinois Energy Law Impacts & ComEd Energy Efficiency Portfolio

Agenda

1. Illinois Energy Law/Plan 6 Updates
2. C&I Energy Efficiency
3. Residential Energy Efficiency
4. Helpful Resources
5. Q&A



Today's Presenters



Rebecca McNish

- **Manager, Energy Efficiency Planning & Evaluation**
- Rebecca.McNish@ComEd.com



Amy Populorum

- **Manager, C&I Customer Journey Coordination**
- Amy.Populorum@ComEd.com



Philip Halliburton

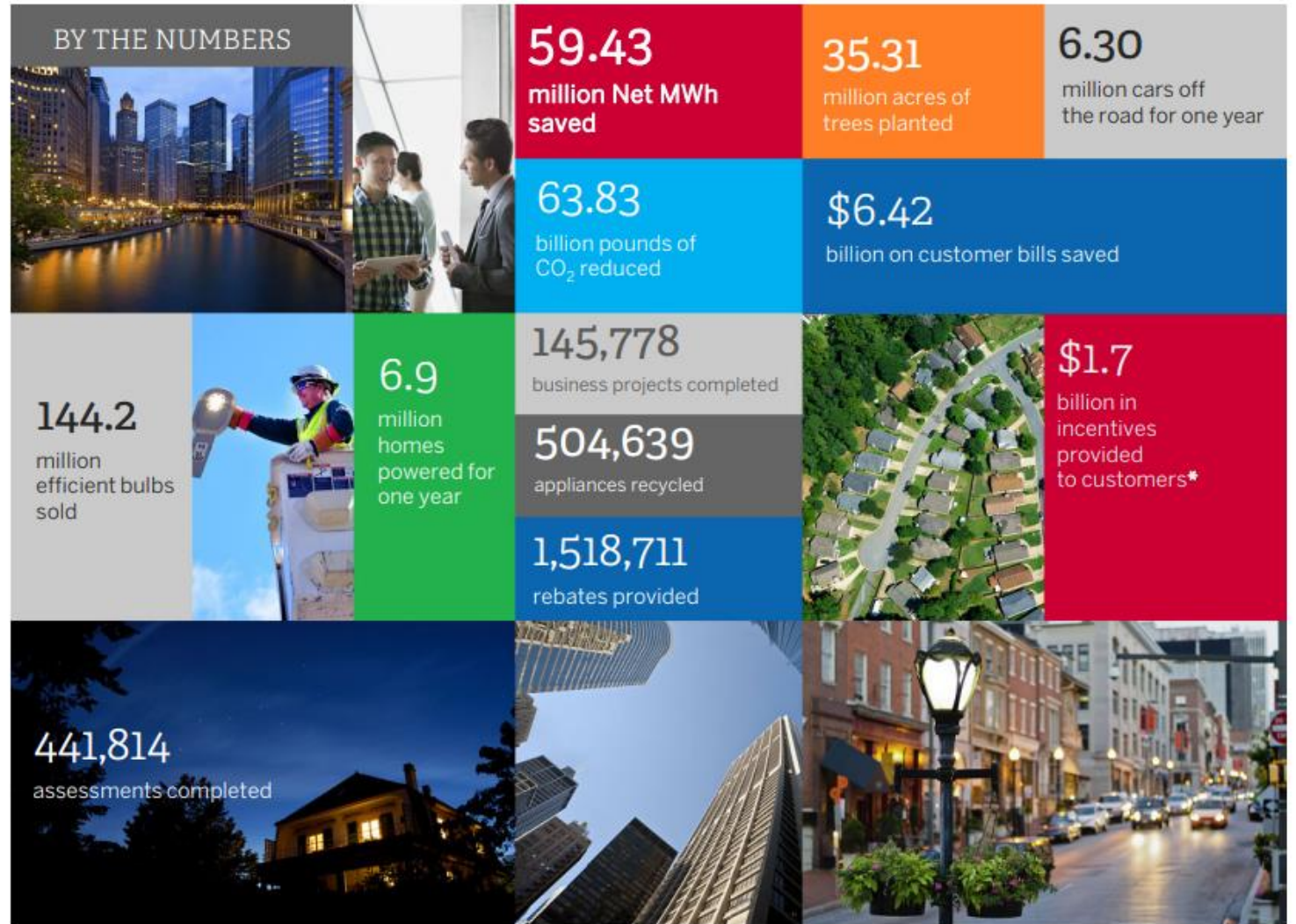
- **Manager, Residential Customer Journey Coordination**
- Philip.Halliburton@ComEd.com

1

Illinois Energy Law & Plan 6 Impacts

By the Numbers

ABOUT THE COMED ENERGY EFFICIENCY PORTFOLIO (FROM 2008 - Q4 2021)



*Based on lifetime net MWh savings realized through CY2021. Incentives for the ongoing year is based on applied percentage of 64%.

Illinois Energy Law Impacts

Energy Efficiency

- Major IEL Changes (beyond Plan 6 Revised Stipulation)
 - Extends EE programs & targets **indefinitely**
 - Commissions **building & industrial electrification** (within limits)
 - Restores largest (>10MW) customers to EE participation (with limited opt-opt)
- Other Changes
 - Increased **reporting** (on low-income, workforce & supplier diversity, & more)
 - Mandate for **integrated delivery**
 - Higher **low-income spend**

Other DSM Changes

- New **Public Schools Carbon-Free Assessment** Program
- New **Pay-As-You-Save** Program
- **DSM-informed** metrics & grid planning proceedings
- Solar pricing and billing changes impacting IT tools and call volumes for **GPC Team**
- **EV Toolkit** & other customer journey changes ahead

Plan Development Process

<i>Plan:</i>	<ul style="list-style-type: none">• Sets forth how ComEd will meet its energy efficiency and demand response goals while remaining within four-year Section 8-103B(m) budgets and maintaining a cost-effective portfolio• Plan and supporting exhibits are filed with the Illinois Commerce Commission for final approval
<i>Process:</i>	<ul style="list-style-type: none">• Involves many months of internal analysis and modeling by Planning, R&D, and Program Implementation• Arrives at mix of programs and measures to best serve customers while meeting statutory goals• Negotiations held with Illinois Commerce Commission (“Staff”) and diverse group of stakeholders, including but not limited to:<ul style="list-style-type: none">• Attorney General, City of Chicago, CUB, ELPC, NRDC• Goal is to reach consensus on the changes required to implement applicable amendments to Section 8-103B of the PUA as set forth in PA 102-0662, culminating in a stipulation agreement

Program Targets

- 2022-2025 EE Revised Plan 6 investment: ~\$1.7B

Item	2022	2023	2024	2025
Statutory CPAS (MWh)	10,981,533	11,952,076	13,031,083	14,110,090
Applicable Annual Incremental Goal (MWh)	1,089,770	970,543	1,079,007	1,079,007
Demand Response Goal (MW)	7.17	7.44	7.42	7.43
Annual Budget	\$427,470,991	\$423,277,681	\$423,277,681	\$423,277,681

- Minimum Spend Goals focused on programs savings for customers and communities in need)
 - 10% of the portfolio budget allocated to public sector customers
 - \$25 million per year third-party EE implementation programs
 - On average over the four-year Plan Period:
 - \$100 million per year on Income Eligible customers
 - 80% of IE budget allocated to whole-building weatherization programs
 - \$32 million allocated to IE Multifamily Upgrades
 - \$10 million/year on EE electrification of IE housing units

Tracking Metrics

Spend	Energy Savings (Electric/Non-Electric)	Non-Energy Impacts	Cost Effectiveness	Weighted Average Measure Life (WAML)
Meet Portfolio Goals	MWh, MW, MWh Converted from other fuels like therms	Estimated Customer Bill Savings	Achieve Total Resource Cost (TRC) \geq 1.0	No more than 0.5 year lower than WAML of 11.9 years
<ul style="list-style-type: none"> Remain within budgets established by Section 8-103B(m) for applicable four-year period Meet minimum spend commitments outlined in the CEL and Revised Stipulation 	<ul style="list-style-type: none"> Non-electricity savings converted and counted toward each year's applicable annual total savings ("AATS") requirement are capped at 10% per year. Non-electricity savings for IE programs must be converted to kWh first. <ul style="list-style-type: none"> EE electrification savings counted toward each year's AATS are capped at 5% per year during the Plan 6 Period. At least 25% of EE electrification savings must come from electrification of end uses in IE housing. 	<ul style="list-style-type: none"> Avoided GHG emissions, water, and societal (health) benefits from avoided emissions 	<ul style="list-style-type: none"> Excludes IE programs kWh are commonly used to weight program design and implementation strategies. 	<ul style="list-style-type: none"> Revised Plan 6 projected WAML = 11.9 years.

Funding Mechanism

- Section 8-103B requires that electric utilities include with their Plan filing a cost recovery tariff mechanism, as provided for under Section 8-103B(d), to fund the proposed EE and DR measures and to ensure the recovery of the prudently and reasonably incurred costs of Commission-approved programs. 220 ILCS 5/8-103B(g)(5).
- Section 8-103B allows ComEd to recover its EE expenditures through a regulatory asset and amortize those costs over a period of time that is equal to the weighted average of the EE measure lives (WAML) implemented for that year that are included in the regulatory asset, which aligns cost recovery with the period during which customers receive a benefit.

2

Commercial & Industrial Energy Efficiency

Plan 6 C&I Highlights

- Simplified program structure
- Increased permanent base incentives
- Promotions to drive participation:
 - Distressed Communities (+30%)
 - K-12 (+20%)
 - Large projects (+20%)
 - Made in Illinois (+10%)
- Springtime accelerators (+20%)
 - “stackable” with above)

ComEd C&I EE Programming	
Plan 5 (2018 – 2021)	Plan 6 (2022 – 2026)
Facility Assessments	Facility Assessments
Standard	Standard
Custom	Custom
Small Business	Small Business
Retro-Commissioning	Retro-Commissioning
Strategic Energy Management	Strategic Energy Management
Industrial Systems	Industrial Systems
New Construction	New Construction
Instant Discounts	Instant Discounts
Small Biz Kits	
Small Facilities	
LED Streetlights	
Distressed Communities	
Nonprofits	
Agriculture*	
Telecom*	
Grocery*	

Absorbed into programs

**targeted outreach*

Public Schools Carbon Free Assessment Program: Summary

Goals

What are the intended goals of the program?

- Directs state electric utilities serving over 500,000 retail customers in the state to implement a Public Schools Carbon-Free Assessment program
- Each plan shall be designed to assist public schools in: (1) increasing the efficiency of their energy usage, (2) reducing the carbon emissions associated with their energy usage, and (3) to move toward a goal of public schools being carbon-free in their energy usage by 2030
- Overarching goals of law are to supply all state public elementary and secondary school facilities with clean energy by 2030 and to achieve carbon-free energy sources for space heat, water heat, and transportation by 2050

General Requirements

What requirements exist for the establishment and conduct of the program?

- Shall be a generally standardized assessment, with some flexibility incorporated to cater to individual school and district characteristics
- Assessments include comprehensive analyses spanning five specific subjects (detailed in follow-on slides), as well as a mechanical insulation evaluation and inspection of the building envelope(s)
- Assessments shall be provided for public schools in the service territory on a complimentary basis, though costs can be reasonably recovered via rates
- Upon completion of assessments, findings shall be documented in a usable report format and provided to the school, and within 3 months, submitted to the Illinois Power Agency and the Illinois Capital Development Board
- All completed reports shall be retained by each utility's Public School Carbon-Free Assessment program

Applicable Deadlines

What pertinent deadlines exist in the Law that apply to the program?

- Public Schools Carbon-Free Assessment program shall be implemented by state electric utilities within one year of the effective date of Law (**September 15, 2022**)
- Harvey School District 152 and Thornton Township High School District 205 are to be prioritized for completion in 2022 (**December 31, 2022**)
- Deadline in which public schools shall have an assessment completed (or at a minimum requested) to receive consideration for state construction grant funding (**June 1, 2023**)
- Electric utilities with Public Schools Carbon-Free Assessment programs may offer assessments to public schools that are not serviced by an electric utility subject to the PSCFA program requirement (**January 1, 2024**)
- Target completion date for assessments conducted on all public schools in the state (**December 31, 2029**)

Sources / Notes: [Illinois Public Act 102-0662](#)

Small Business Case Study: City of Freeport

- ComEd worked with the city for several projects and incentives:
 - High-bay light fixtures for Road Department truck bays
 - Lights for airport ramp and hangars
 - Estimated annual electric cost savings \$27k (or 301k kWh)
 - Project cost \$115k, incentive \$63k
 - Payback less than 2 years
- City Manager Crow shared story with local paper and ILCMA



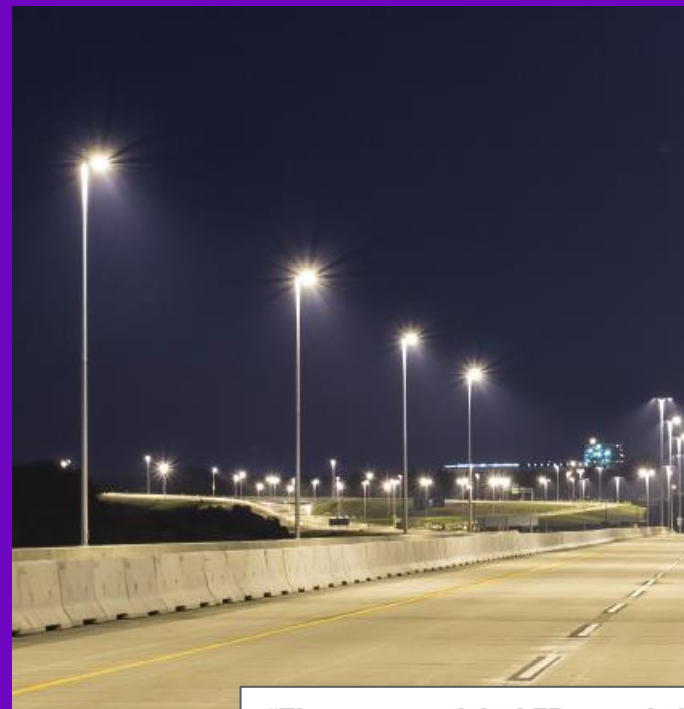
Standard Offering Case Study: Zion-Benton Public Library

- Free facility assessment
- Outdoor and indoor lighting upgrades, plus building energy management system
- ComEd incentives reduced project cost by \$12k
- Reduced annual energy cost by \$4.2k
 - Savings of 47.6k kWh per year
- Estimated project payback of four (4) months



LED Streetlight Case Study: Village of Montgomery

- 889 streetlights upgraded to high-efficiency LED fixtures and bulbs
- ComEd incentives reduced project cost by 36%
- Reduced annual energy cost by \$20k
 - Reduced energy use by 65%



“The impacts of the LED streetlights have been very beneficial for the Village of Montgomery. The ability to perform this work in a phased approach has enabled the Public Works Department staff to perform the change out of light fixtures internally. This was a major benefit to reducing costs of the project and completed the project in a timely manner. The Village looks forward to future benefits such as reduced energy rates, increased visibility for the public, and uniformity in lighting throughout the Village. The process to complete this project with ComEd was streamline and effective.”

Mark Wolf, Director of Public Works,
Village of Montgomery

RCx Flex Case Study: Aurora Public Library (Eola Branch)

- Lighting and air-handling unit automation ensured optimal, situational energy use
- Duct static pressure, boiler supply temperature reset, and rooftop unit economizer created optimal atmosphere and reduced maintenance needs
- Reduced annual energy cost by \$15k
 - Savings of 166k kWh per year
- Immediate project payback



New Construction Case Study: City of Countryside

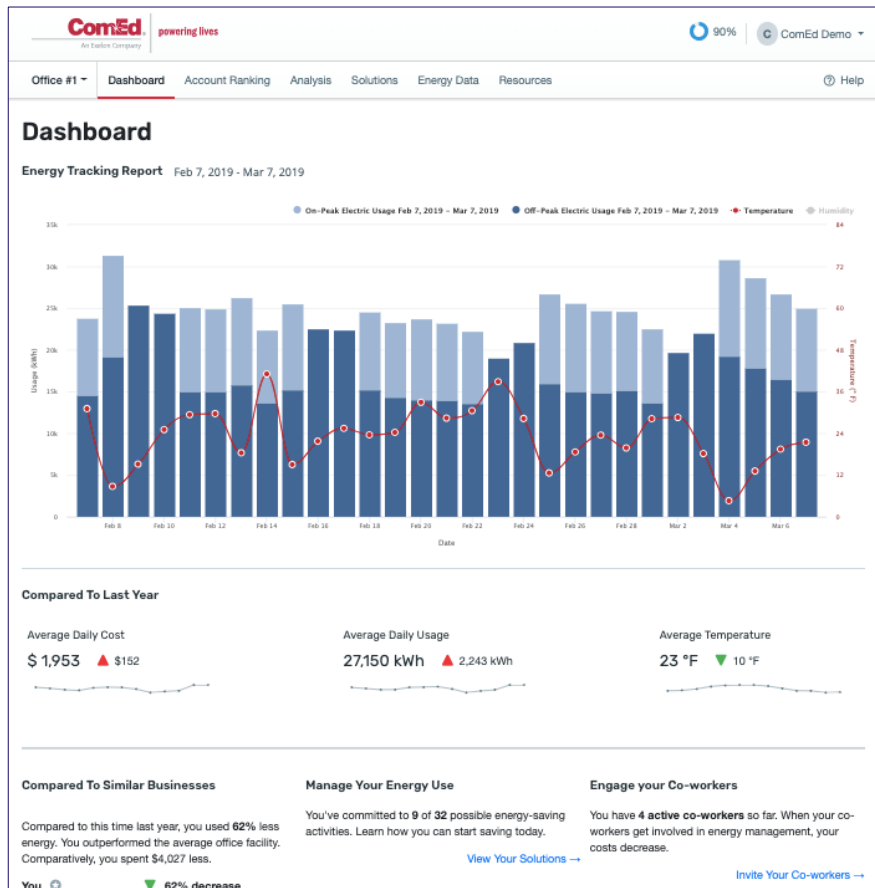
- One of first **NET ZERO** municipal buildings in Illinois
- Incentives are based on the implementation of beyond-code improvements to the building envelope, lighting and HVAC. Other incentivized energy efficiency measures include:
 - Efficient LED lighting, both interior and exterior
 - Improved window and wall thermal performance
 - Efficient ventilation system (dedicated outdoor air with enthalpy wheel heat recovery)
- Reduced annual energy cost by estimated \$18.7k*
 - Savings of 209k kWh per year



* Based on an electric rate of 8.95 cents per kWh

Business Energy Analyzer (BEA)

- Free online tool to help you:
 - Analyze energy use and manage energy across multiple buildings or sites
 - Explore energy efficiency solutions during your Facility Assessment
- Sign up quickly and easily with your account number and ZIP: ComEd.com/BEA



Don't Wait - Get Started Today!

Commercial & Industrial

Reach out to your External Affairs Manager, or contact us:

REQUEST A FACILITY ASSESSMENT

ComEd.com/FacilityAssessment

GIVE US A CALL

855-533-2700

VISIT US ONLINE

ComEd.com/BusinessSavings

ComEd.com/HomeSavings

ComEd.com/IncomeEligible

SEND US AN EMAIL

BusinessEE@ComEd.com

PublicSector@ComEd.com

GET STARTED WITH BUSINESS ENERGY ANALYZER

ComEd.com/BEA

ACCESS THE ENERGY USAGE DATA TOOL

EnergyUsageData.com

ENROLL IN SMART RETURNS VOLUNTARY LOAD REDUCTION PROGRAM (VLR)

SmartReturns@exeloncorp.com

TAKE THE FIRST STEP TO GO SOLAR BY LEARNING ABOUT YOUR SOLAR OPTIONS TODAY

ComEd.com/Solar

LEARN MORE ABOUT EV

[ComEd EV Savings, Benefits & Incentives](#)



3

Residential Energy Efficiency

Home Energy Savings

FREE assessment and energy saving products

- Get a **FREE** home energy assessment with free and discounted* energy-savings products – installed for **FREE!**
 - ENERGY STAR® certified LED bulbs
 - WaterSense® certified showerheads & aerators
 - Hot water pipe insulation
 - Advanced power strips *
 - Programmable and smart thermostats*
- Virtual option available with products delivered for self-installation
- Customers receive a customized assessment report with additional recommendations
- All products free to income eligible customers

FREE energy retrofits

- Qualifying income-eligible customers can receive a FREE energy retrofit with weatherization upgrades, such as air sealing and insulation, HVAC tune-ups or replacements and health & safety improvements.

Single-family homes, two-flats, condos and townhomes are eligible

Delivered jointly with the local gas utilities



ComEd.com/assessment

Multi-Family Energy Savings

FREE assessment with energy saving products, incentives & services

- Multi-family property owners and public housing authorities can take advantage of FREE assessment and energy efficiency products as well as incentives to complete additional upgrades. Energy-saving products and services are available for both tenant units and common areas and may include:
 - ENERGY STAR® certified LEDs
 - programmable or smart thermostats
 - Incentives for boiler replacements, HVAC system upgrades and weatherization improvements
 - Higher incentives for income eligible and public housing properties



MultiFamilyPortal.com

*Apartments and housing cooperatives with three or more residential units are eligible.
Delivered jointly with the local gas utilities.*

New Construction

Provide expert energy efficiency guidance and financial incentives to integrated energy conservation measures to exceed the requirements of the Illinois Energy Conservation Code.

Affordable Housing*

- To qualify, the development must include eligible units that are targeted to households at or below 80% of area median income (AMI)
- Incentives based on \$/gross square footage of eligible living space

Electric Homes

- Promotes high performance all-electric homes that enable stacked benefits of all-electric energy efficiency, demand-response, electric vehicles, solar and new rate structures.
- Single-family, townhome, duplex, 2-4 flats and detached accessory dwelling units are eligible
- Tiered incentives to builders for installing a bundle of high-performance energy efficiency measures up to \$2000/home.

* Program delivered jointly with Nicor Gas

ComEd.com/NewConstruction



Retail – Appliance, Home Products & Lighting

Save up to \$75 with rebates on select **ENERGY STAR®** certified appliances & home products*:

- Smart Thermostat (\$75)
- Refrigerators (\$50)
- Clothes Washers & Electric Clothes Dryers (\$40)
- Air Purifiers (\$50)
- Dehumidifiers (\$45 - stand alone unit only)
- Ventilation fans (\$25)
- Water Dispenser (\$25 - hot/cold combination)

Get instant in-store discounts on select **ENERGY STAR** LEDs and energy-efficient home products:

- Look for the ComEd “Lower Price” sticker at a retailer near you
- Over 1,000 participating retail locations
- Discounts also available on select smart thermostats, advanced power strips, air purifiers, advanced power strips, water dispensers, dehumidifiers and room ACs
- Deeper discounts in certain, designated low-income zip codes

* Instant coupons also available on select products and participating retailers

ComEd.com/Rebates





Product Distribution

ComEd provides free energy efficiency products and kits through a variety of community partners.

- Food Banks & Pantries - ENERGY STAR certified LEDs and other EE products to more than 600 local food pantries through Feeding America food banks and our extended network of food banks and pantries.
- Community Action Agency* – energy saving kits distributed in coordination with agency administration of LIHEAP.
- Elementary Schools* - energy savings kits to 5th grade teachers and student. Curriculum support, activities and virtual performances available to 3-5th classrooms.

* Program delivered jointly with the local gas utilities

ComEd.com/IncomeEligible

Home Heating & Cooling Discounts

Discounts on qualifying Heating & Cooling equipment and services

- Central Air Conditioning*
- Air Source Heat Pump*
- Ductless Mini-Split Heat Pump*
- Air Source Heat Pump & Central Air Conditioning Tune-Ups
- ENERGY STAR® certified Smart Thermostats
- Furnace Blower Motor (ECM)
- Duct Sealing
- Geothermal Heat Pump System

Installation and services must be completed by a participating Energy Efficiency Service Provider.

* Incentives delivered through participating distributions

ComEd.com/HeatingCooling

Don't Wait - Get Started Today!

Residential & Income Eligible

Reach out to your External Affairs Manager, or contact us:

HOME ENERGY SAVINGS

ComEd.com/Assessment

MULTI-FAMILY ENERGY SAVINGS

Multifamilyportal.com

NEW CONSTRUCTION

ComEd.com/NewConstruction

VISIT US ONLINE

ComEd.com/HomeSavings

GIVE US A CALL

855-433-2700

RETAIL- APPLIANCE, HOME PRODUCTS & LIGHTING

ComEd.com/Rebates

PRODUCT DISTRIBUTION

ComEd.com/IncomeEligible

HOME HEATING AND COOLING

ComEd.com/HeatingCooling

EFFICIENT CHOICE

ComEd.EfficientChoice.com

ALERTS AND NOTIFICATIONS

ComEd.com/Alerts

ON BILL FINANCING

ComEd.com/EnergyLoan

MARKETPLACE

Comed.com/Marketplace

SMART ASSISTANCE MANAGER (SAM)

Comed.com/SAM



Thank you

Appendix

Integrated Customer Experience: What's Next?

Illinois Energy Law

*“... the utility’s plan **integrates** the delivery of energy efficiency programs **with natural gas efficiency programs**, programs promoting **distributed solar**, programs promoting **demand response** and other efforts to address **bill payment issues**, including, but not limited to, LIHEAP and the Percentage of Income Payment Plan, to the extent such integration is practical and has the potential to **enhance customer engagement, minimize market confusion, or reduce administrative costs.**” Pg 631-632*

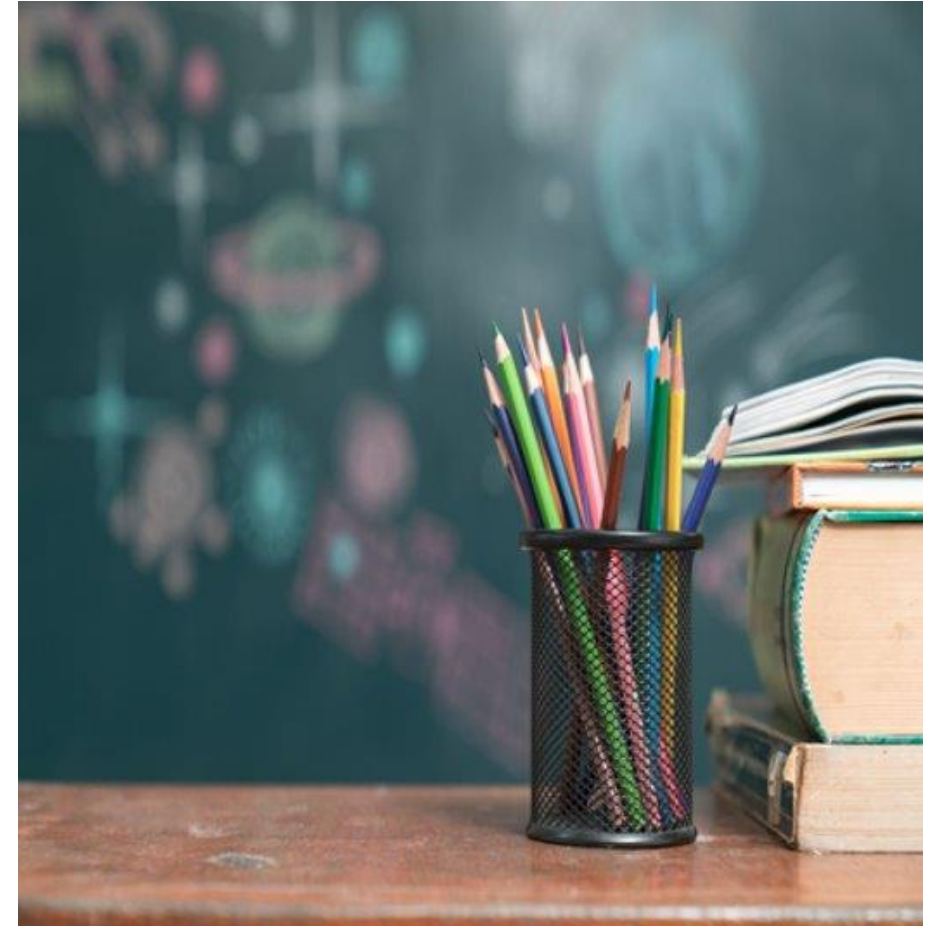
“The utilities shall market and implement low-income energy efficiency programs in coordination with low-income assistance programs, the Illinois Solar for All Program, and weatherization whenever practicable... The utilities shall also pilot targeting customers with high arrearages, high energy intensity, or energy assistance programs with energy efficiency offerings...” Pg 604

New Law, New Opportunities

- Expand integrated messaging & delivery for EE, DR, & DP
- Pursue coordination opportunities with Solar For All
- Pursue new opportunities of coordination between EE and Financial Assistance, including LIHEAP & PIPP
- Expand targeting customers in need with EE program and track impacts
- Webpage cross promotions
- Expanded opportunities presented in facility assessments
- Develop tracking and reporting of impact

2022 Standard Offering Bonus Incentives

- **Spring Forward Bonus – Additional 20%**
 - Private and public sector customers who complete a standard project by **July 1, 2022**
 - Private and public sector customers who submit a new pre-application for a standard project by **July 1, 2022**, and complete the project by **October 31, 2022**
 - This additional project incentive can be combined with other additional project incentives
- **LEEP (Large Energy Efficiency Project) AHEAD!**
 - **20% incentive** for private sector customers who complete a new 2022 standard project with a final incentive of at least \$50,000 by **October 31, 2022**
 - **20% incentive** for public sector customers who complete a new 2022 standard project with a final incentive of at least \$25,000 by **October 31, 2022**
- **Schools**
 - **20% incentive** for private and public sector K-12 schools who complete a new 2022 standard project by **October 31, 2022**
- **Made in Illinois**
 - **10% incentive** for installing equipment that is at least 50% manufactured or assembled in Illinois



For more information about these promotions, [click here](#).

Distressed Communities

- Rockford Community of the Future launched in Q2
- Distressed Communities program awareness
- Incentives – **30% incentive** for customers in distressed communities who complete a new 2022 standard project by **October 31, 2022**.

2022 Distressed Community Eligibility List

1. Alsip	14. City of Chicago*	27. Hillside	40. Park Forest
2. Aurora	15. Crest Hill	28. Hometown	41. Pembroke Township
3. Bellwood	16. Dekalb	29. Joliet	42. Peru
4. Berkeley	17. Dolton	30. Justice	43. Pontiac
5. Berwyn	18. Elgin	31. Kankakee	44. Posen
6. Blue Island	19. Elizabeth	32. Lansing	45. Richton Park
7. Bridgeview	20. Elmwood Park	33. Lyons	46. River Grove
8. Broadview	21. Fox Lake	34. Markham	47. Riverdale
9. Burbank	22. Glenwood	35. Maywood	48. Robbins
10. Calumet City	23. Great Lakes	36. Melrose Park	49. Rockford
11. Chicago Heights	24. Harvard	37. Midlothian	50. Schiller Park
12. Chicago Ridge	25. Harvey	38. North Chicago	51. South Holland
13. Cicero	26. Hazel Crest	39. Palos Hills	
52. Steger	55. Summit Argo	58. Worth	
53. Stone Park	56. University Park	59. Zion	
54. Streator	57. Waukegan		

*City of Chicago zip codes include: 60621, 60636, 60624, 60623, 60644, 60651, 60609, 60649, 60632, 60637, 60620, 60629, 60653, 60619, 60617, 60628, 60639, 60626, 60612, 60608, 60659, 60616, 60615, 60633, 60645, 60660 and 60641.



For more information about this promotion, [click here](#).

PSCFA: Customer Journey



Initial Engagement and Scheduling

- ✓ Coordinate with LCS (large customer service) for initial engagement
- ✓ Coordinate with ComEd Public School & Outreach Planning
- ✓ Assessments for an entire school district can be coordinated through District Business Manager
 - ✓ Business Manager can provide the appropriate point(s) of contact for each facility in the school district
 - ✓ Assessments can be efficiently scheduled on a per district basis with the Business Manager as the primary point of contact
 - ✓ Guidance can also be provided on other key facilities not specifically covered on the ISBE Facility directory, such as bus depots

Performance of On-Site Assessment

- ✓ Once contact is established with individual facility representative and an on-site assessment date is arranged, the following data should be requested prior to the assessment date:
 - ✓ Standard energy efficiency assessment information
 - ✓ Vehicle / School Bus inventory details
 - ✓ Self-completed WELL scorecard
 - ✓ Building envelope data for entry into BEM software
- ✓ All provided data will be validated during facility walkthrough

Post Assessment Engagement

- ✓ For each site assessment, include District Business Manager in addition to facility representative
 - ✓ Guidance can be provided on any state, national, or private funding sources, as well as potential applicability to the state's solar REC programs (Illinois Shines and Solar for All)
 - ✓ Business Manager will likely be involved with any grant writing process
- ✓ Share assessment reports with CDB and IPA within 3 months of completion

Online Resource

Alerts & Notification - Get the notifications you want, when you want them, how you want them.

- Updates on outages and restoration times.
- Notifications on billing and payment.
- Receive High Usage Alerts when energy usage is trending higher than normal.
- Set up your choice of alerts for text, email, or phone

ComEd.com/Alerts

Efficient Choice - Shop and compare energy-efficient products.

- Product Score - algorithms analyze and score products daily based on their energy efficiency.
- Product Reviews - One rating that combines reviews from leading retailers and trusted experts.
- Deals - Track price drops and get notified when it's time to buy your favorite products.

ComEd.efficientchoice.com



ON BILL FINANCING

Illinois Energy Efficiency Loans provide special financing for the purchase and installation of qualified energy-efficiency products and services.

Eligible homeowners, owners of residential building of 4 units or less may apply.

The loan payment will be billed monthly on the ComEd bill. Borrowers can finance \$500 - \$20,000.

ComEd.com/EnergyLoan



A woman with short dark hair, wearing a light orange top and dark jeans, is sitting on a patterned couch. She is holding a white cup of coffee in her right hand and looking at a tablet device in her left hand. There are yellow pillows and books on the couch next to her. The background is a white brick wall.

Home Energy Reports

An opt-out only behavioral-based program, which provides ~1.6 million residential customers with information on how they use energy within their households.

- Paper reports are mailed to customers 2 – 6 times/yr and includes neighbor comparison information, personalized energy-efficiency tips, and information on additional ComEd energy efficiency offerings.
- Customers who have provided a valid email address receive a monthly emailed Home Energy Report (eHER) in addition to the paper report(s).
- Reports leverage social norms to drive customer adoption of energy efficient behavior