



DuPage River Salt Creek Workgroup



Chicago Area Waterways  
CHLORIDE WORKGROUP

For the Metropolitan Mayors Caucus 2/15/2025

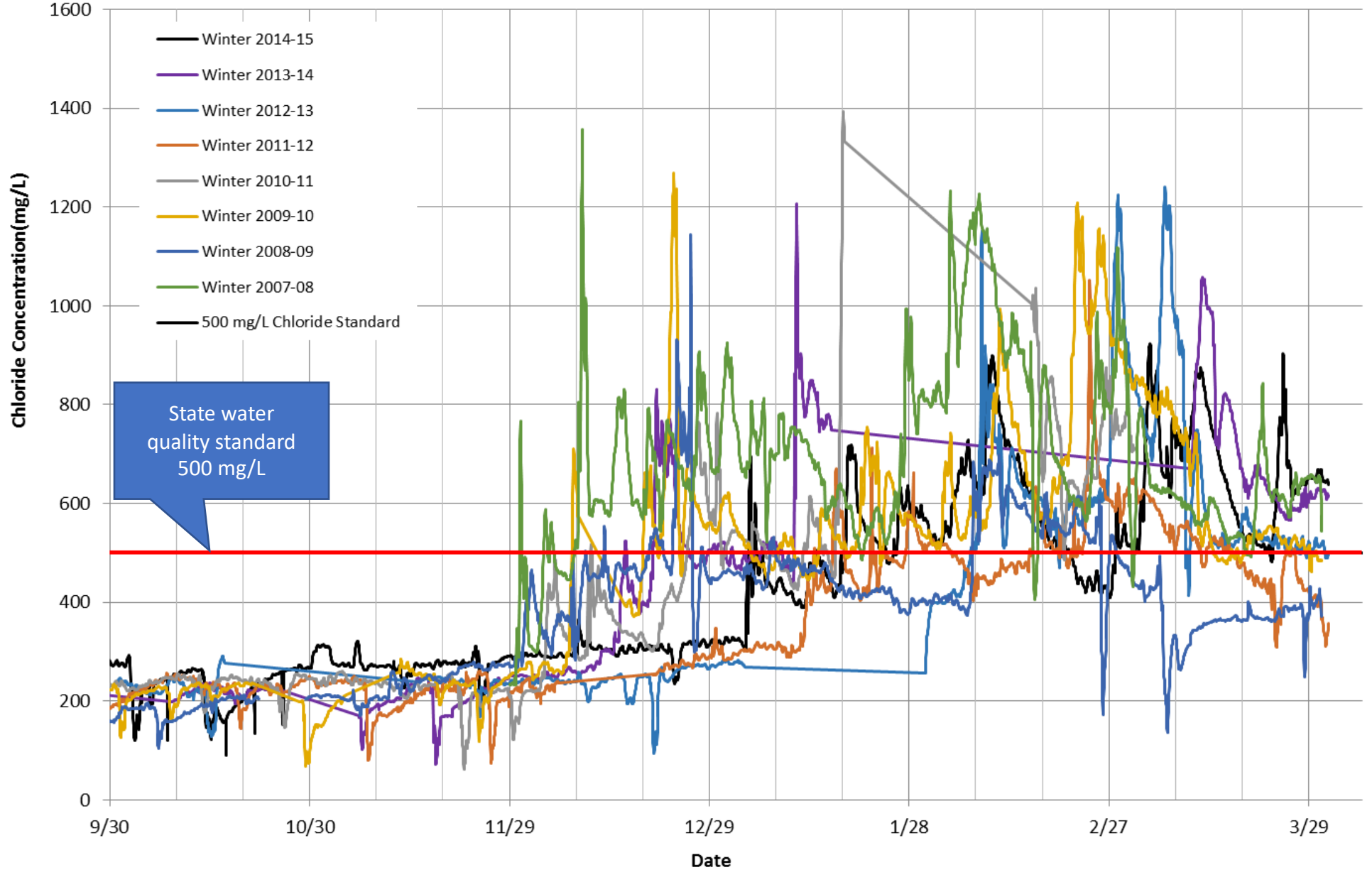
# Road Salt; Water Quality Trends and Regulations in NE Illinois

Stephen McCracken

The Conservation Foundation

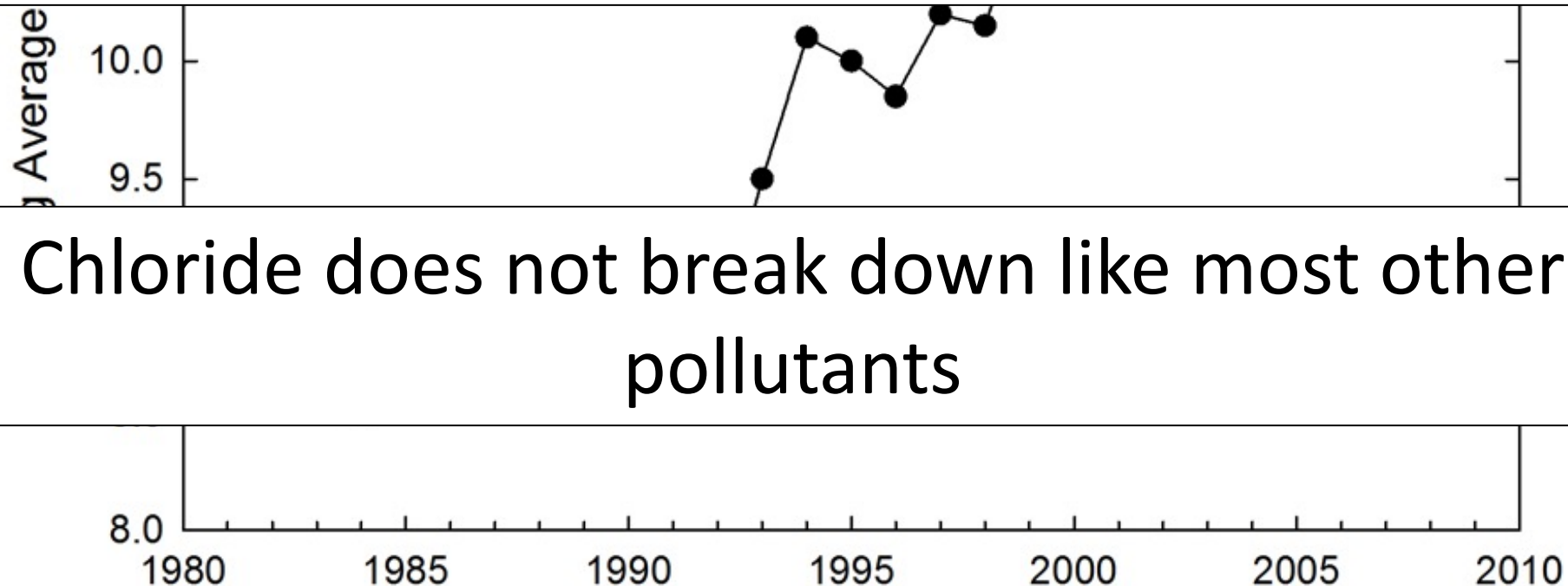


# SCWR Estimated Chloride Concentration Winter 2007-2014 Comparison



## Chloride Concentrations in Lake Michigan ( USEPA, 2011.)

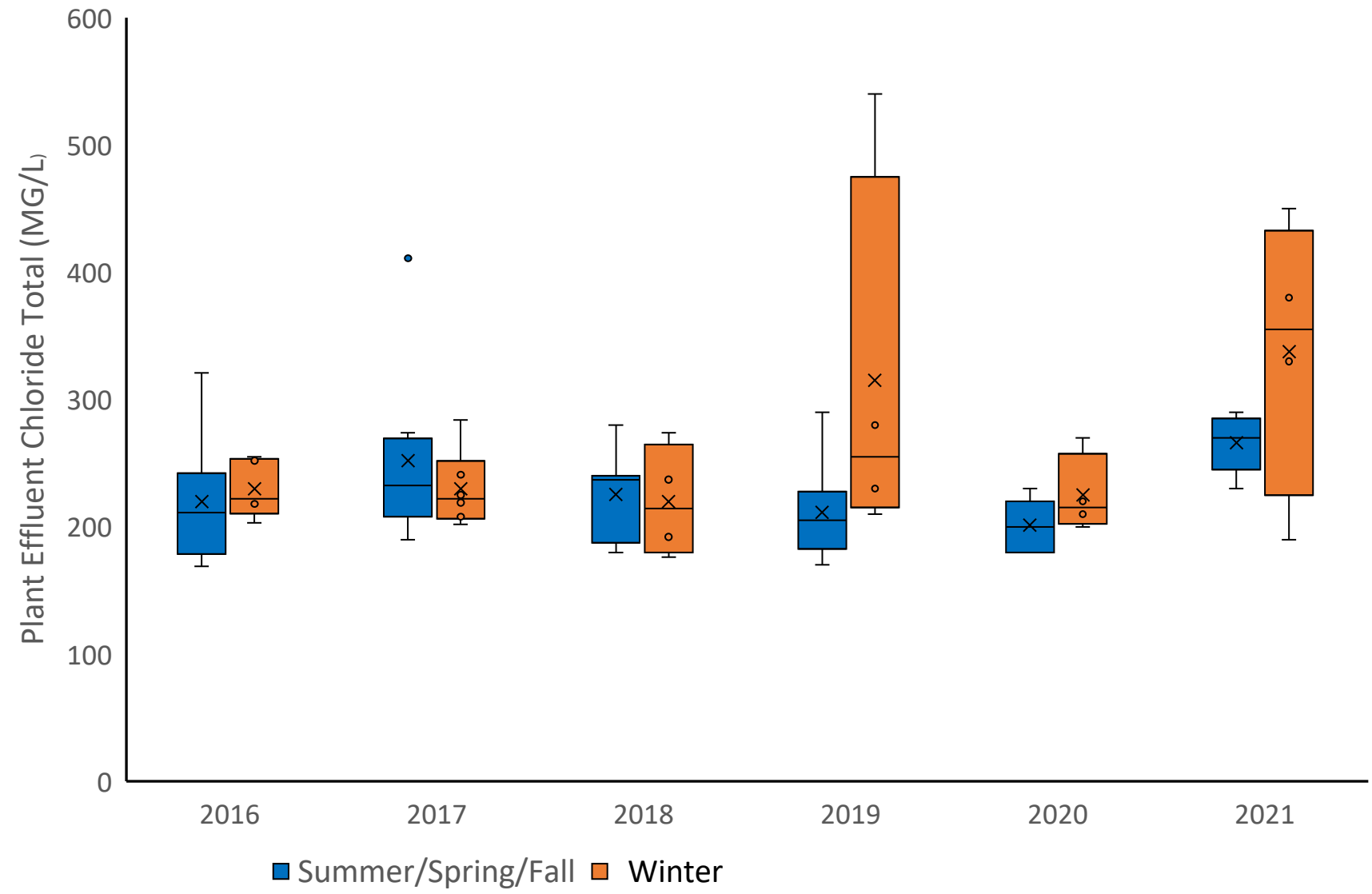
As well as rivers and Lakes we have ground  
water accumulation  
(including drinking water wells)



Chloride does not break down like most other  
pollutants

# West Chicago Winfield Wastewater Authority

## Winter and Summer Effluent Chloride Concentrations





# New ILR40 Chloride Related Requirements

- If a permittee performs deicing activities, requires participation in a watershed group(s) organized to implement reduction measures
- Minimize the exposure of... chemical storage tanks, deicing material storage facilities, temporary stockpile, and other materials to precipitation and storm water
- Deicing material must be stored in a permanent or temporary storage structure (or seasonal tarping)
  - If no permanent structures, new permanent storage structures shall be constructed within two years
- Requires annual employee training to prevent and reduce storm water pollution from snow disposal and deicing
- If ambient water quality monitoring is performed, requires monitoring for chlorides



*Slide Courtesy of Dan Bounds Baxter and Woodman*

**ANNUAL CHLORIDE CONCENTRATION - WINTER MONTHS (2007-2020)**  
**SALT CREEK AT WOLF ROAD**

