

City of Geneva Comprehensive Stormwater Study



Metropolitan Mayors Caucus 10-19-2021

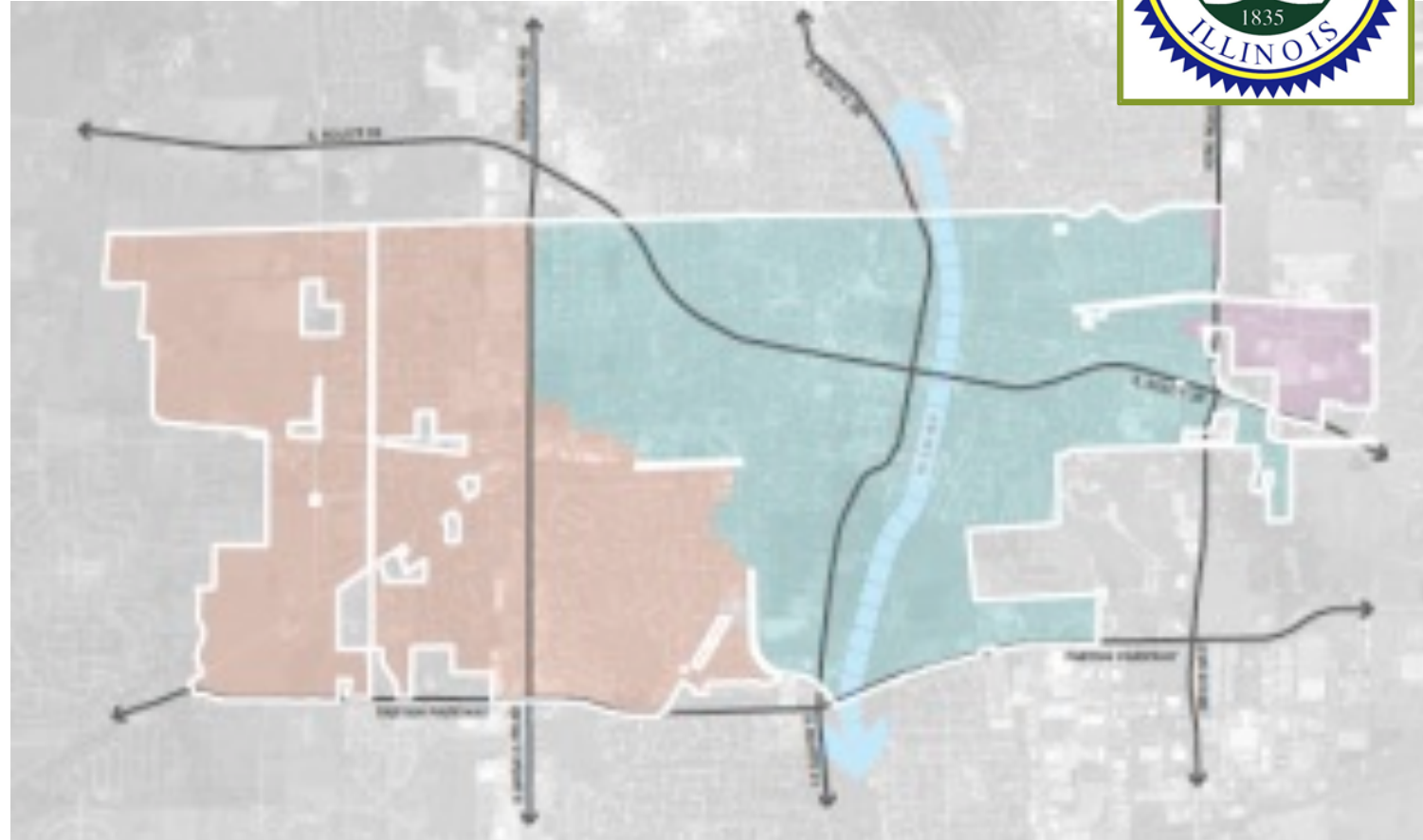
Geneva Stormwater Study Overview

- Study Initiated March 2020 – WBK Engineering engaged to collaborate with City staff. Completion projected December 2021.
- Objectives
 - Public Engagement
 - Citywide Evaluations
 - Capital Plan deliverable
 - Foundational / Baseline
- Improved decision making of resource allocation



Community Drainage Overview

- Kane County
- 9.75 sq.mi.
- Two Primary watersheds
- Fox River
- Growth 1950-1960 & 1990-2000



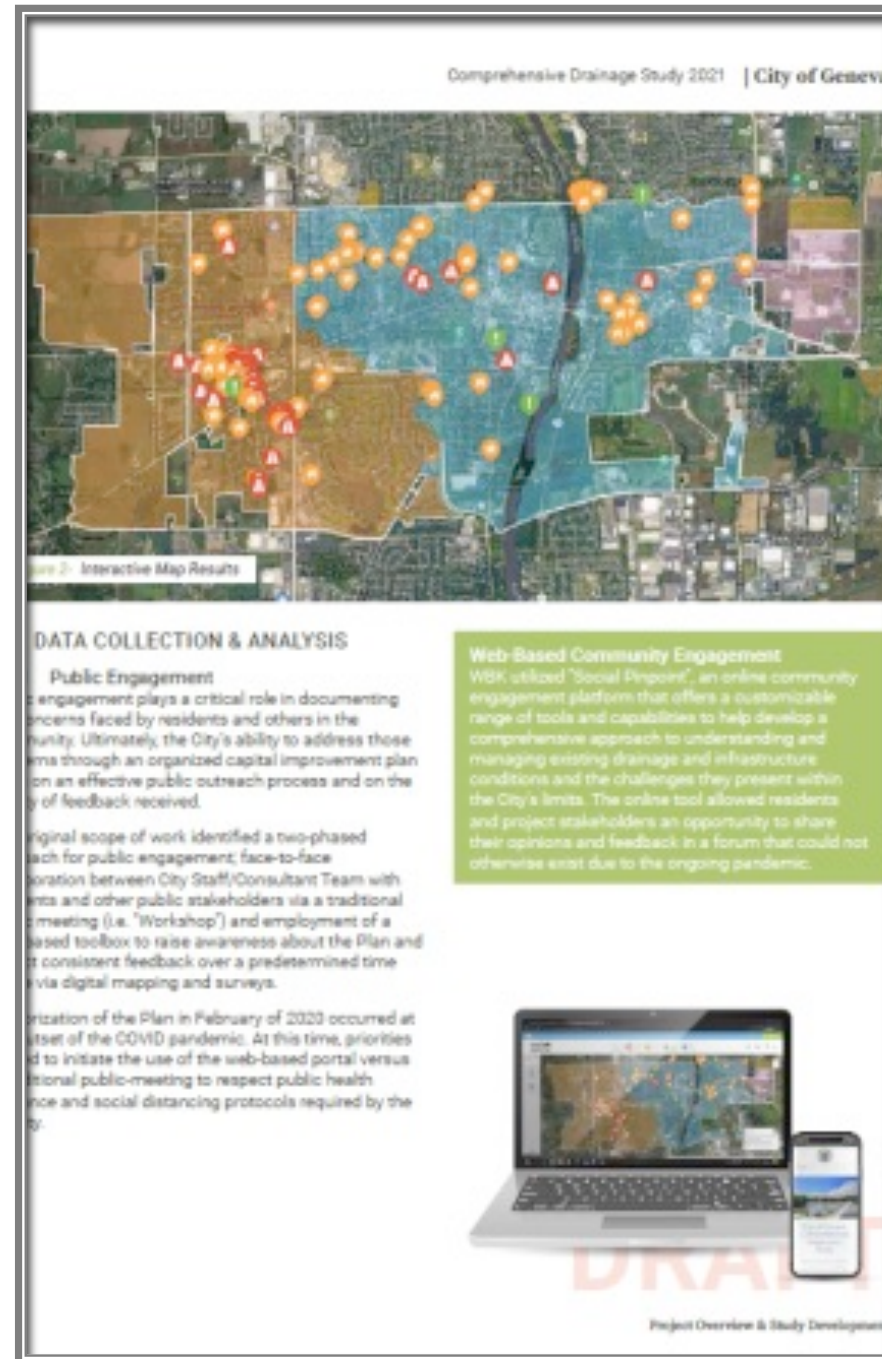


Drainage Evaluation Findings

- No severe stormwater problems compared to other metropolitan municipalities
- Fox River not a significant community concern
- Concerns can be found throughout the City in both mature and newer neighborhoods

Public Outreach and Engagement

- Web Based Mapping Platform
- Open House
- City Work Order System
- May 20, 2020 Rainfall Event





Drainage Study Areas

- 21 Specific Drainage Concerns / Areas identified
- Location Specific and neighborhood
- Range of complexity
- Hydrologic & Hydraulic Analyses as needed
- Alternatives
- Budget Estimates

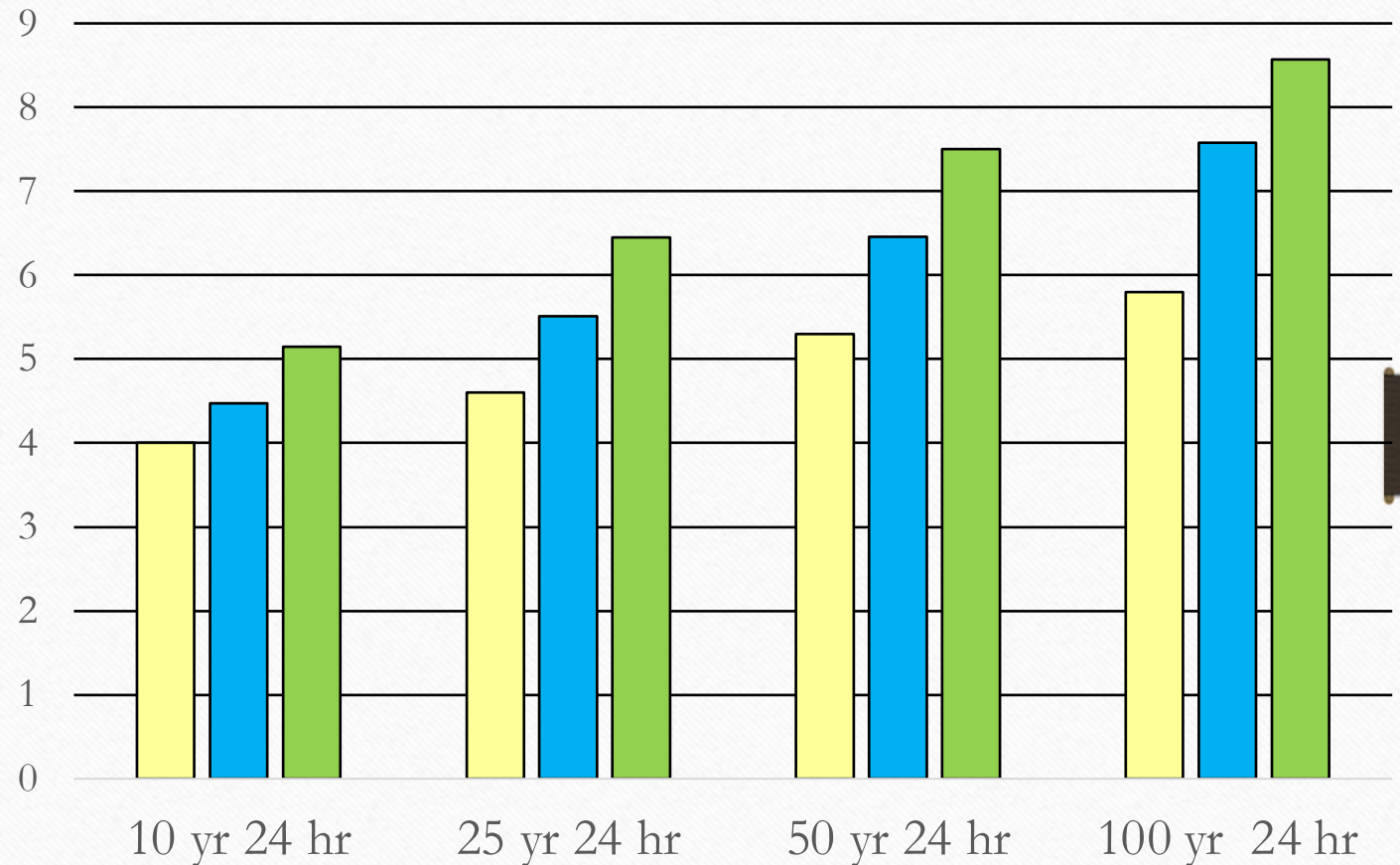




Rainfall Data Comparison

- Three Primary sources
- Rainfall Events
- 100 YR 24 Hr +13%, +48%
- 10 YR 1 Hr +15%, +21%

TP 40* Bulletin 70 Bulletin 75



Growth and Development Patterns



Census	Population	Change
1860	997	-
1950	5,139	4,142
1960	7,646	2,507
1970	9,049	1,403
1980	9,881	832
1990	12,617	2,736
2000	19,515	6,898
2010	21,495	1,980
2019 (est)	21,809	314

Source: U.S. Decennial Census

Bulletin 70 – 1989
Circular 173 – 1990
Bulletin 71 1992

Kane County
Stormwater Ordinance
2000-2001



Value to the Community



- Improved Decision Making
- Proactive Capital Planning
- Risk Mitigation
- Asset Management Approach

