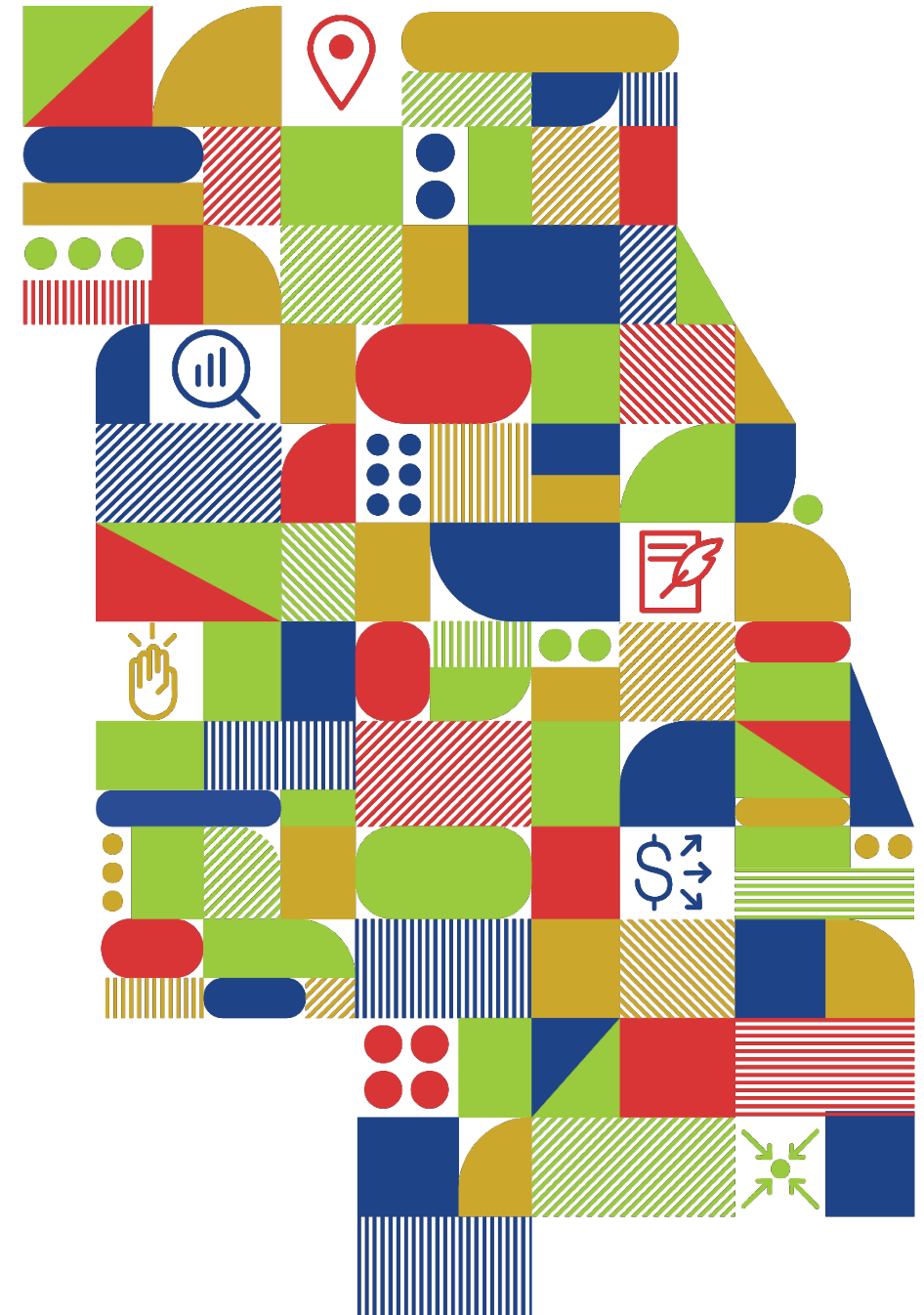




# Regional greenhouse gas emissions inventory

August 17, 2021



# 2010 and 2015 inventories

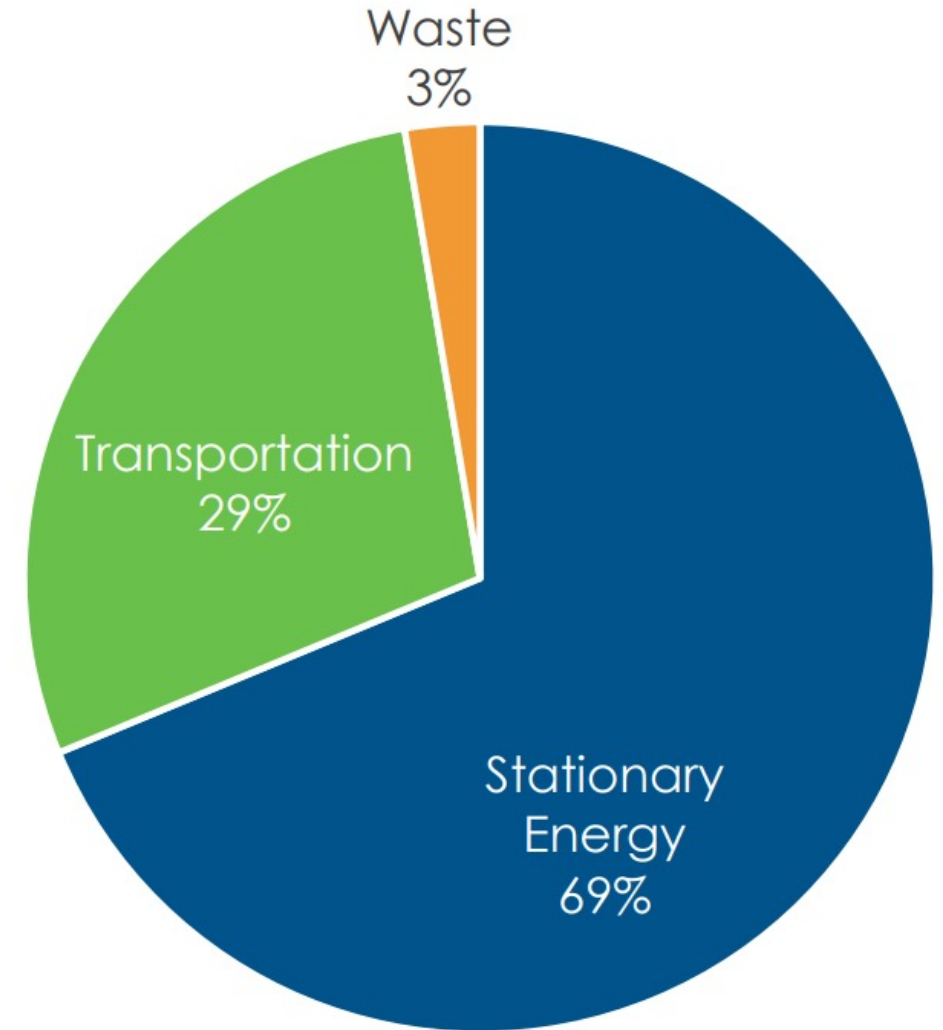
Regional and county-level emissions

Buildings, transportation, and waste

Trends analysis

Basic projections through 2050

## 2015 Regional Emissions by Sector



Note: Totals in figures do not always sum to 100 percent due to independent rounding.

# 2019 inventory

Everything from past inventories

NEW

*Local emissions summaries*

- *Building emissions/energy use*
- *Transportation estimates (tbd)*
- *Other indicators (tbd)*



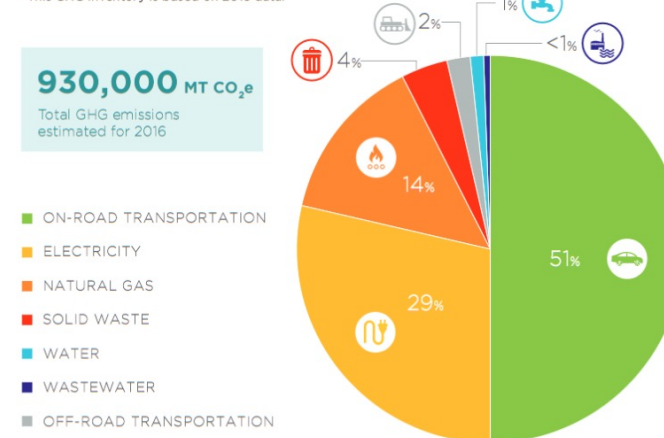
The ReCAP Snapshot is prepared for the City as a part of the SANDAG Regional Climate Action Planning Framework (ReCAP) to support, but not replace, cities' monitoring greenhouse gas (GHG) emissions and/or climate action plan (CAP) implementation over time. Climate planning activities vary by jurisdiction and are dependent on a variety of factors, such as funding and staff capacity. As the first edition of Snapshots (November 2019), this document will set a baseline for monitoring trends into the future. More information, including a FAQ document and Methods and Data Sources Summary, is available at [www.sandag.org/climate](http://www.sandag.org/climate).

## RECENT ACCOMPLISHMENTS

- 1 Adopted** ordinances for energy efficiency, renewable energy (e.g., photovoltaics [PV]), alternative water heating, electric vehicle (EV) charging infrastructure and Transportation Demand Management.
- 2 Completed** microgrid feasibility study for the Carlsbad Safety and Service Center complex.
- 3 Installed** 20 workplace/fleet EV charging stations (10 at the Faraday Center and 10 at the Carlsbad City Library) through the Electrify America program.
- 4 Partnered** with other North County Coastal cities to complete a Community Choice Energy (CCE) feasibility study.
- 5 Continued** SANDAG Energy Roadmap implementation through building audits and identification of energy conservation measures at two community centers and parks.

## GHG INVENTORY\*

\*This GHG inventory is based on 2016 data.



## JURISDICTION QUICK FACTS

**112,003**  
population in 2016

**39**  
square miles

**43,100**  
occupied housing  
units in 2016\*

Current CAP progress:  
**Adopted 2015**

Subregion:  
**North County  
Coastal**

\* Occupied housing does not include group quarters.

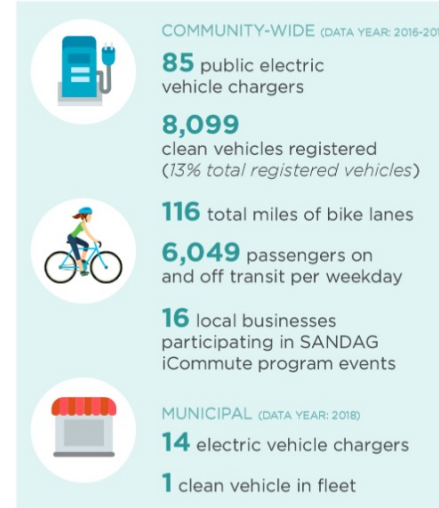
# Local indicators

- Charging stations/EV registrations
- Bike lane miles/walk score
- Transit access
- Air Quality Index/criterion pollutants
- Tree canopy coverage
- CAP/sustainability plan
- GRC member?

## ReCAP ACTIVITY DATA FOR THE CITY OF CARLSBAD

These select activity data represent best available data\* for common GHG reduction activities included in local CAPs across the SANDAG region and may not align precisely to GHG reduction measures and/or the metrics identified within a jurisdiction's CAP. Community-wide activities occur within a jurisdiction's boundaries; municipal activities occur at City-owned facilities. For more information on data sources, the Methods and Data Sources Summary is available at [www.sandag.org/climate](http://www.sandag.org/climate).

### TRANSPORTATION



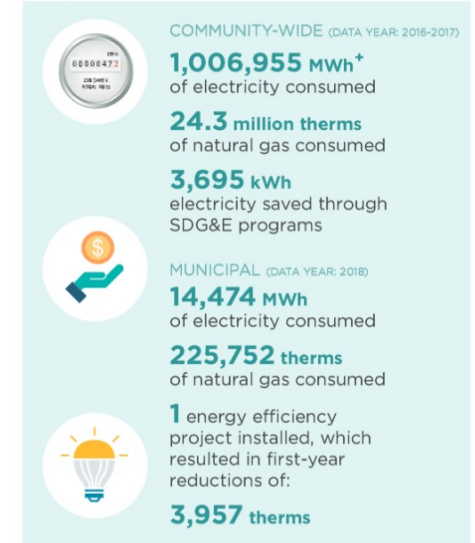
### WATER + WASTEWATER



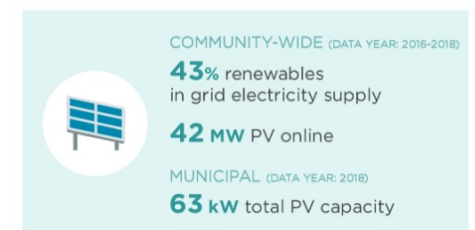
### SOLID WASTE



### ENERGY EFFICIENCY



### RENEWABLE ENERGY



\* This value includes 100 percent electricity use at the Carlsbad Desalination Plant, which treats water for the entire San Diego region. The electricity use at the Plant is approximately 17 percent of community-wide electricity use, based on estimates provided by the San Diego County Water Authority and the Plant's GHG reduction plan.



**Jared Patton, AICP**  
**312.386.8623**  
**[jpatton@cmmap.illinois.gov](mailto:jpatton@cmmap.illinois.gov)**